



Grosvenor Crescent | Dartford, Kent, DA1 5AP



£375,000 to £400,000

Freehold

ROBINSON-JACKSON
Our service will *move* you

Grosvenor Crescent, Dartford

Robinson Jackson are pleased to offer this three bedroom family home located ideally for Mainline station and town centre along being in the catchment for popular Primary, Secondary & Grammar Schools

Property Features

- Council Tax: C
- EPC Rating: D
- Set on a Corner Plot
- Extended Kitchen
- Three Bedroom Family Home
- Two Reception Rooms
- Close to Mainline Station & Town Centre
- Catchment to Local Schools



Interior

Entrance Porch: UPVC entrance door. Double glazed window to front. Frosted secondary glazed windows to sides. Tiled flooring.

Entrance Hall: Part frosted glazed wooden entrance door. Frosted window to front. Picture rail. Under stairs storage cupboard. Radiator. Laminate flooring

Lounge: 3.78 (12'5")m into bay x 3.48 (11'5")m Double glazed bay window to front. Coved ceiling. Picture rail. Radiator. Laminate flooring.

Dining Room: 5.05m x 3.3m (16'7" x 10'10") Double glazed window to side. Radiator. Wood laminate flooring. Archway to kitchen.

Kitchen: 5m x 1.98m (16'5" x 6'6") Double glazed windows and double glazed door to garden. Range of wall and base units with work surfaces over and incorporating one and half bowl sink unit with mixer taps. Double oven and gas hob with extractor fan over. Space for fridge and freezer. Plumbed for dishwasher. Radiator. Cupboard with plumbing for washing machine. Space for tumble dryer. Wall mounted boiler. Vinyl tiled flooring.

Landing: Double glazed window to side. Access to loft. Storage cupboard. Carpet.

Bedroom 1: 3.89 (12'9")m into bay x 2.44 (8')m Double glazed bay window to front. Picture rail. Radiator. Carpet.

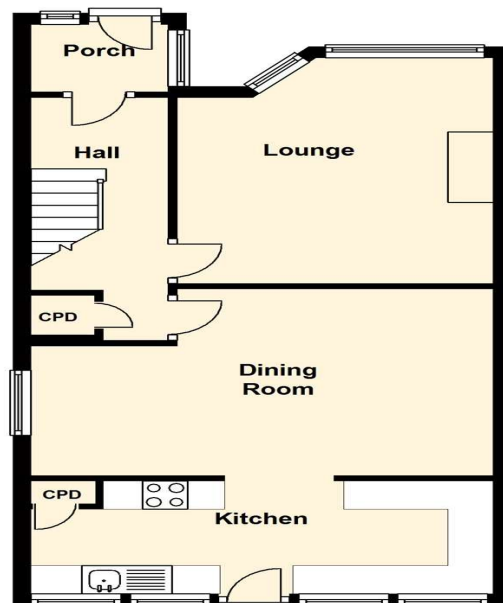
Bedroom 2: 3.35m x 3.2m (11' x 10'6") Double glazed window to rear. Picture rail. Radiator. Laminate flooring.

Bedroom 3: 2.39m x 1.93m (7'10" x 6'4") Double glazed window to front. Picture rail. Radiator. Laminate flooring.

Bathroom: Frosted double glazed window to rear. Panelled bath with "telephone" style taps and electric shower over. Pedestal wash hand basin. Low level WC. Radiator. Carpet.

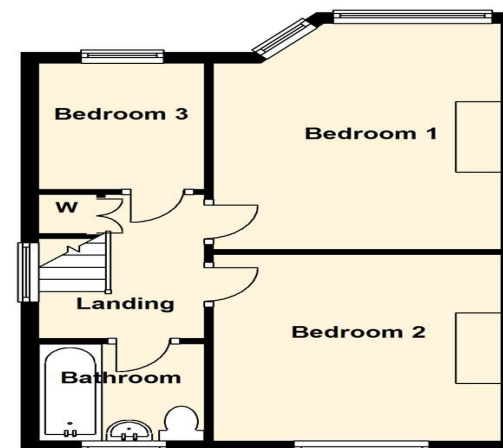
Ground Floor

Approx. 523.7 sq. feet



First Floor

Approx. 386.7 sq. feet



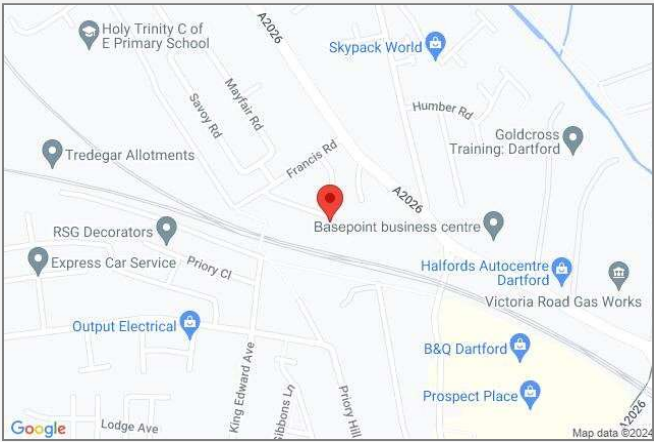
Total area: approx. 910.4 sq. feet





Property Location

Grosvenor Crescent, Dartford, Kent, DA1 5AP



Additional Information

The boiler is located in the kitchen

Total Floor Area: 91 sq. metres

The garden faces South East

Exterior

Rear Garden: Approx. 30' x 24'. Decked area with steps leading to paved garden. Shed. Side access.

Fron Garden: Pathway leading to entrance porch. Shingled area.

**FOR MORE INFORMATION
CONTACT US TODAY.**

01322 281281
Robinson Jackson
22 Market Street,
Dartford,
Kent DA1 1EZ
dartford@robinson-jackson.com



These particulars do not form part of an offer or contract and must not be relied upon as statements or representation of fact. Any areas, measurements, journey times or distances are approximate. The text, images, photographs and plans are for guidance only and are not necessarily comprehensive. It should not be assumed that the property has all necessary planning, building regulation or other consents and we have not tested any services, equipment or facilities. References to tenure are based on information supplied by the seller. Buyer should verify all information themselves by inspection or otherwise prior to a legal commitment to purchase. Photos and images are subject to copyright.