



Morris Drive | Belvedere, DA17 6FJ



Guide Price £425k to £450k

Freehold

**ROBINSON-JACKSON**  
Our service will *move* you

## Morris Drive, Belvedere

New to the market is this modern three bedroom family home situated in the Tower Hill Development benefiting from residents parking and an en-suite shower room. Ideal for any first time buyer or buy to let investor.

### Property Features

- Council Tax: TBC
- EPC Rating: A
- Three bedrooms
- En-suite shower room
- 22'2 x 15'1 Lounge/diner
- Ground floor WC
- Allocated parking
- A must view



## Interior

**Entrance Hall** Composite door to front with frosted glass panels, radiator, storage cupboard, engineered wood flooring

**Ground floor WC** Low level wc, corner pedestal wash hand basin with mixer tap, radiator

**Lounge** 6.76m x 4.6m (22'2" x 15'1") Double glazed french doors to rear, two Velux windows, radiator, storage cupboard, engineered wood flooring

**Kitchen** 3.7m x 2.46m (12'2" x 8'1") Double glazed window to front, wall and base units with work surfaces above, stainless steel sink unit with mixer tap, integrated oven, four ring gas hob, stainless steel splash back, extractor hood, integrated dishwasher, fridge/freezer and washing machine, combi boiler

**Landing** Radiator, carpet, storage cupboard, access to loft

**Bedroom 1** 4.22m x 2.6m (13'10" x 8'6") Double glazed window to rear, radiator, carpet

**En-suite shower room** Shower cubicle, pedestal wash hand basin with mixer tap low level wc, radiator, part tiled walls, tiled floor, extractor fan

**Bedroom 2** 3.12m x 2.6m (10'3" x 8'6") Double glazed window to front, radiator, carpet

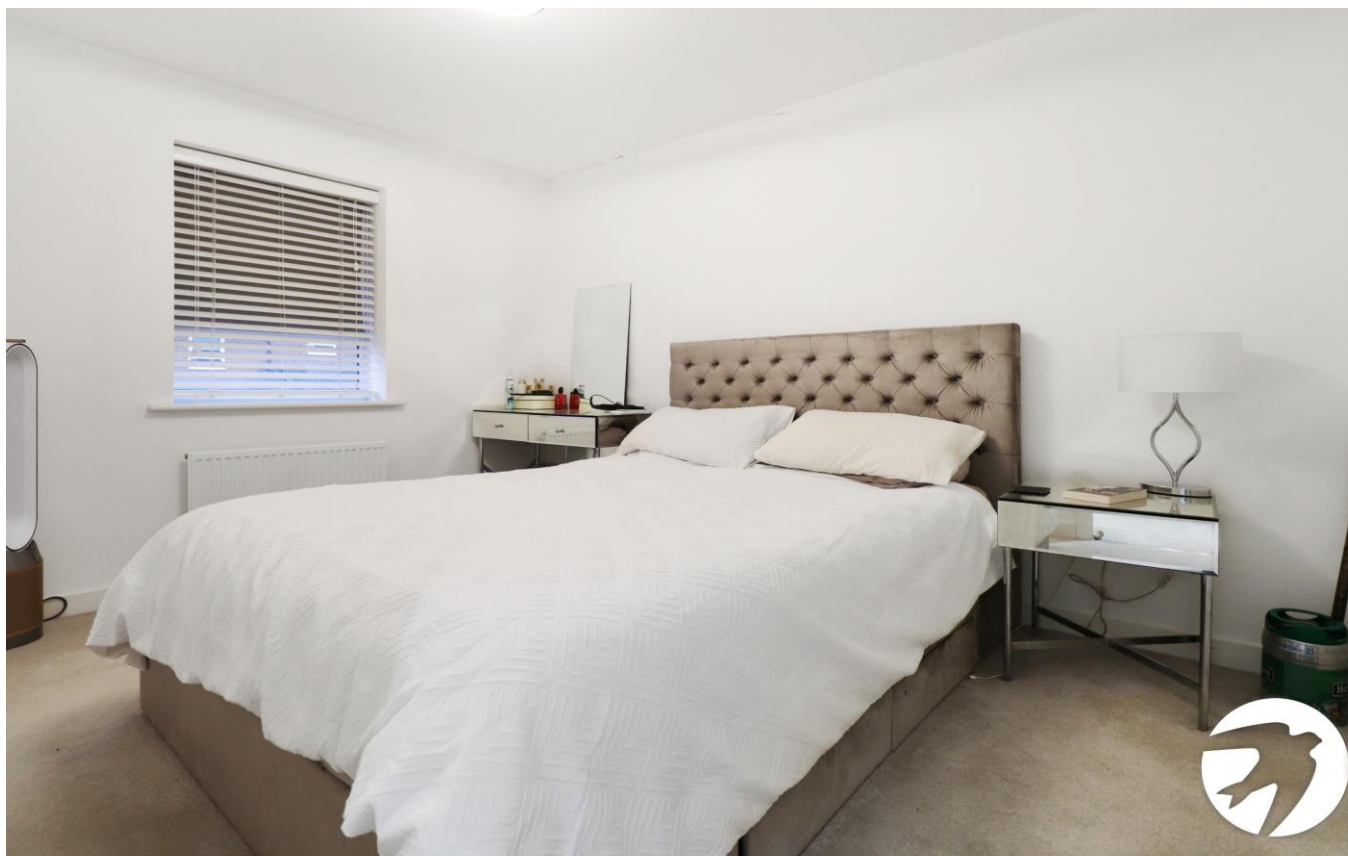
**Bedroom 3** 2.72m x 1.9m (8'11" x 6'3") Double glazed window to rear, radiator, carpet

**Bathroom** Double glazed frosted window to front, panelled bath with mixer tap and shower attachment, wash hand basin, low level wc, radiator, part tiled walls, tiled floor, extractor fan

## Exterior

**Garden** Porcelain tiled patio, mainly laid to lawn, planted sleeper borders, access to rear

**Parking** Allocated parking, visitors bays available





## Property Location

Morris Drive, Belvedere, DA17 6FJ



\*All distances from branch postcode. Train time from nearest station.

## Additional Information

At the heart of Belvedere is Nuxley Village – where you'll find shops, pubs, restaurants and the Robinson Jackson branch. Explore a little further and you'll find Lesnes Abbey, with its historic monastic ruins and formal gardens, and Bostall Woods with its protected bluebell fields and ancient trees.

Belvedere residents are a manageable walk or one stop on the train line away from Abbey Wood's Elizabeth Line.

FOR MORE INFORMATION  
CONTACT US TODAY.

01322 441010

Robinson Jackson  
61 Nuxley Road,  
Belvedere,  
Kent DA17 5JN

[belvedere@robinson-jackson.com](mailto:belvedere@robinson-jackson.com)

