



Plough Wents Road | Chart Sutton, Maidstone, ME17 3RY



Guide Price £450,000 - £500,000

Freehold

ROBINSON MICHAEL & JACKSON

Our service will *move* you

Plough Wents Road, Chart Sutton

GUIDE PRICE £450,000-£500,000

This deceptively spacious semi-detached house offers the perfect combination of comfort, style, and convenience. Step inside and discover a beautifully presented interior with ample room for the whole family.

Property Features

- Council Tax: E
- EPC Rating: To be confirmed
- Three double bedrooms
- Semi-detached family home situated over three floors
- Deceptively large spacious interior
- Large driveway with ample parking
- Short distance to mainline train station
- Large annexe suitable for home office or guest accommodation



Interior

Entrance Hall Stairs leading up

Lounge 5.23m x 3.76m (17'2" x 12'4") Bay window to the front, fireplace, built in cupboards and shelving

Dining/Family Area 5.8m x 4.34m (19' x 14'3") Window to the rear, fireplace, built in cupboards, leads through to the kitchen

Kitchen 4.3m x 2.97m (14'1" x 9'9") Window to the rear, Velux windows, integrated appliances, leads through to the utility room

Utility Room 4.88m x 3.18m (16' x 10'5") Double doors leading into the garden, window to the rear

Landing Stairs leading down and up to second floor

Bedroom 2 4.5m x 3.78m (14'9" x 12'5") Window to the front, built in wardrobe space, fireplace, double bedroom

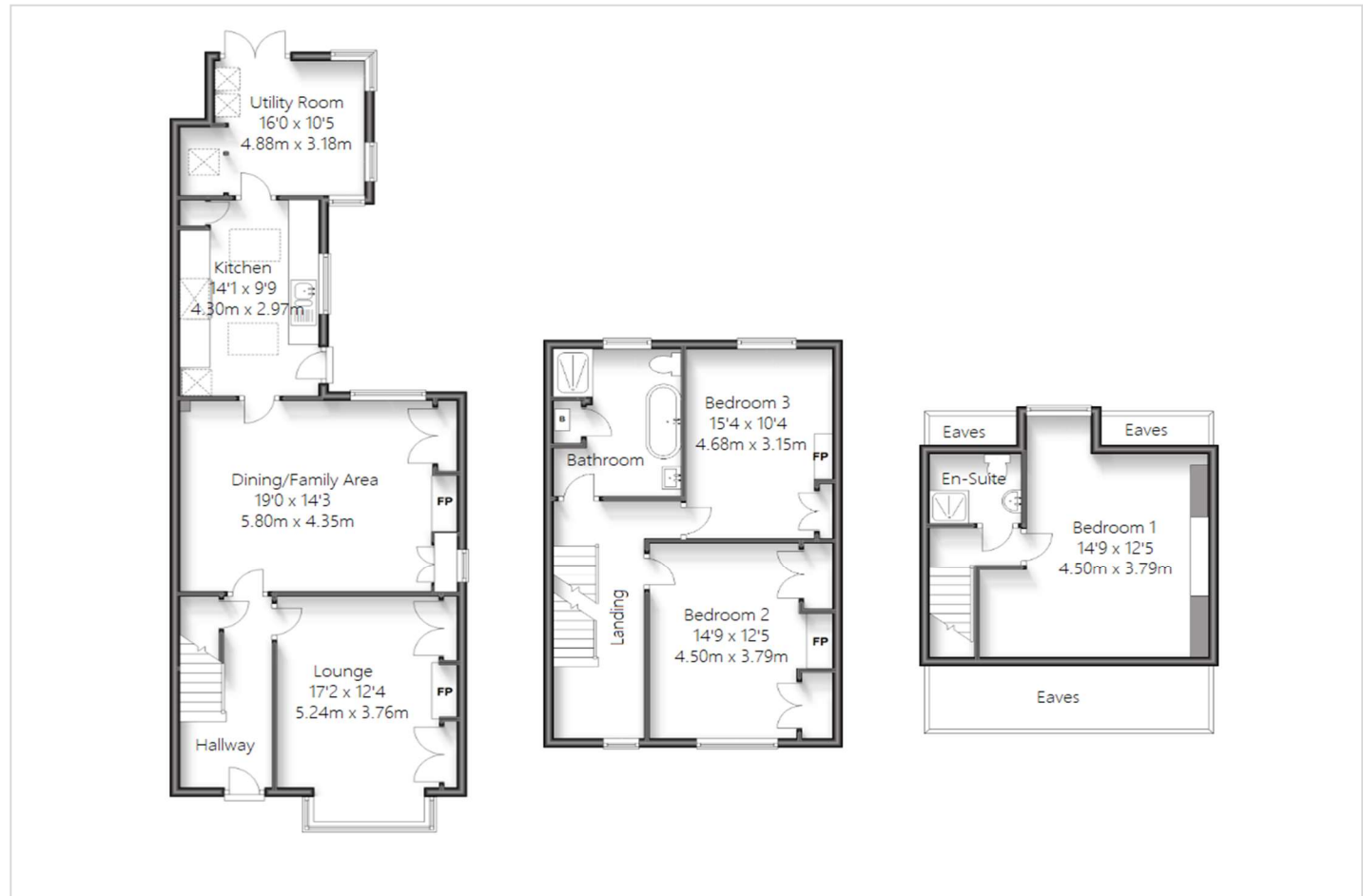
Bedroom 3 4.67m x 3.15m (15'4" x 10'4") Window to the rear, fireplace, built in cupboard, double bedroom

Bathroom Window to the rear, walk in shower, free-standing bath, basin & WC

Landing Stairs leading down

Bedroom 1 4.5m x 3.78m (14'9" x 12'5") Window to the side, double bedroom, eaves for extra storage, located on the second floor

En-Suite 1.9m x 1.63m (6'3" x 5'4") Walk in shower, basin & WC





Property Location

Plough Wents Road, Chart Sutton, Maidstone, ME17 3RY



Scan for the latest properties...

Follow us on **facebook** for early access to new properties for sale.

FOR MORE INFORMATION CONTACT US TODAY.

01622 476666
Robinson Michael & Jackson
15A King Street
Maidstone,
Kent ME14 1BA
maidstone@robinson-jackson.com

These particulars do not form part of an offer or contract and must not be relied upon as statements or representation of fact. Any areas, measurements, journey times or distances are approximate. The text, images, photographs and plans are for guidance only and are not necessarily comprehensive. It should not be assumed that the property has all necessary planning, building regulation or other consents and we have not tested any services, equipment or facilities. References to tenure are based on information supplied by the seller. Buyer should verify all information themselves by inspection or otherwise prior to a legal commitment to purchase. Photos and images are subject to copyright.