



Fieldside Road | Bromley, BR1 4LA



Guide Price: £400,000 - £425,000

Freehold

ROBINSON-JACKSON
Our service will *move* you

Fieldside Road, Bromley

A light and airy terraced house situated on a quiet residential road within close proximity to Beckenham Place Park. The property is offered in good condition throughout and comprises two double bedrooms, spacious reception, modern kitchen and shower room. Additional benefits include ample storage, private rear garden with rear access and access to local amenities.

Property Features

- Council Tax: C
- EPC Rating: TBC
- Two Double Bedrooms
- Spacious Reception
- Modern Kitchen
- Shower Room
- Private Rear Garden
- Access to Local Amenities



Interior

Lounge 4.8m max x 4.17m max (15'9" max x 13'8" max) Double glazed window to front, under stairs storage, radiators, laminate flooring.

Kitchen 2.26m x 3.15m (7'5" x 10'4") Double glazed window to rear, range of wall and base units, fitted oven, hob and extractor fan, roll top work surface, tiled splash back, sink with mixer tap, space and plumbing for washing machine, wall mounted combi boiler, tiled flooring.

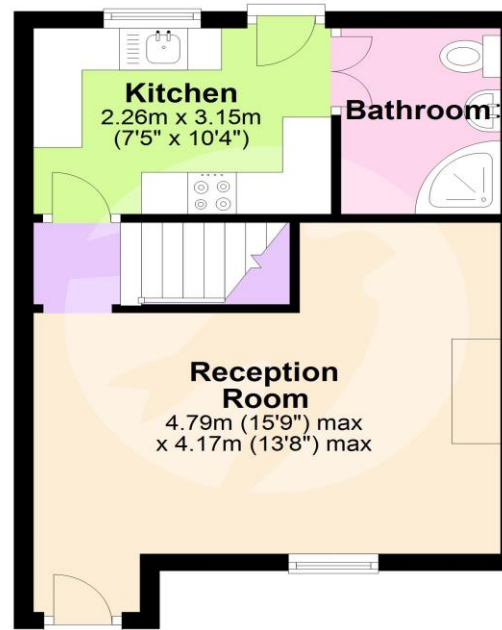
Ground Floor Bathroom Double glazed window to front, shower cubicle with overhead shower, storage unit housing hand basin with mixer tap, low level W.C., extractor fan, radiator, tiled flooring.

Landing Loft hatch.

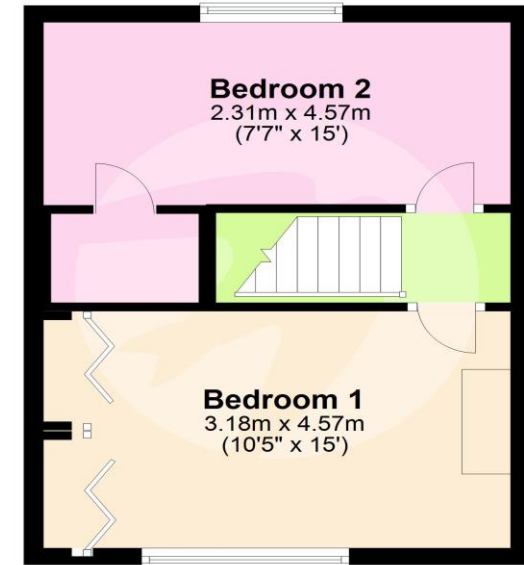
Bedroom 1 3.18m x 4.57m (10'5" x 15') Double glazed window to front, fitted wardrobes, radiator, carpet.

Bedroom 2 2.3m x 4.57m (7'7" x 15') Double glazed window to rear, storage cupboard, radiator, carpet.

Ground Floor



First Floor



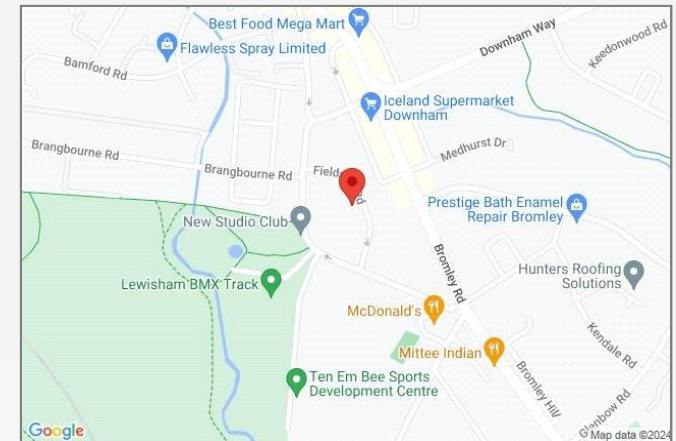
This floor plan is for illustrative purposes only. It is not drawn to scale. Measurements are approximate. Plan produced using PlanUp.





Property Location

Fieldside Road, Bromley, BR1 4LA



*All distances from branch postcode. Train time from nearest station.

Location

Bromley is one of Greater London's largest boroughs and it is also one of the greenest. Bromley itself is a self-sufficient town with an impressive shopping centre, the largest green space in Lewisham 'Beckenham Place Park', a theatre, two mainline train stations, a recently upgraded leisure centre and a grammar school. There's also a regeneration plan across Bromley with a new hotel, a nine-screen cinema, new apartments, 25,000 square feet of café and restaurant space, improved parking and new public realm areas in the planning.

Additional Information

Local Authority: London Borough of Lewisham

Council Tax: Band C (£1,712 pa)

**FOR MORE INFORMATION
CONTACT US TODAY.**

020 8698 1234

Robinson Jackson

87 Rushey Green,

Catford

SE6 4AF

jamie.nicol@robinson-jackson.com



These particulars do not form part of an offer or contract and must not be relied upon as statements or representation of fact. Any areas, measurements, journey times or distances are approximate. The text, images, photographs and plans are for guidance only and are not necessarily comprehensive. It should not be assumed that the property has all necessary planning, building regulation or other consents and we have not tested any services, equipment or facilities. References to tenure are based on information supplied by the seller. Buyer should verify all information themselves by inspection or otherwise prior to a legal commitment to purchase. Photos and images are subject to copyright.