



Hardy Close | Queenborough, Kent, ME11 5AU

 3  1  1

Offers in excess of £260,000 Freehold

**ROBINSON MICHAEL & JACKSON**   
Our service will *move* you



# Hardy Close, Queenborough

Ideally located in the popular Queenborough area, this three-bedroom terrace property offers a blend of modern features and practicality.

The kitchen is designed with functionality in mind, equipped with contemporary appliances and ample storage space. The adjacent spacious lounge area provides flexibility for various seating arrangements and gatherings, illuminated by natural light through large windows.

A ground floor WC adds convenience to daily living, while three good-sized bedrooms on the first floor offer comfortable accommodation. The tiled family bathroom features modern fixtures, combining functionality with a touch of elegance.

Outside, a landscaped rear garden provides a private outdoor space for relaxation or entertaining. Parking is available for two vehicles, ensuring convenience for residents.

In summary, this property in Queenborough features a modern kitchen, a spacious lounge, a ground floor WC, three bedrooms, a tiled family bathroom, a landscaped rear garden, and parking for two, making it a practical and comfortable living space.



## Property Features

- Council Tax: B
- EPC Rating: B
- Three bedroom terrace
- Parking for Two
- Ground floor WC
- Well-presented throughout
- Landscaped rear garden
- Desirable cul-de-sac location

## Interior

Entrance Hall:

Ground Floor Cloakroom:

**Kitchen:** 3.63m x 3.07m (11'11" x 10'1")

**Lounge/Dining Room:** 4.04m x 4.01m (13'3" x 13'2")

**Bedroom 1:** 5.4m x 2.64m (17'9" x 8'8")

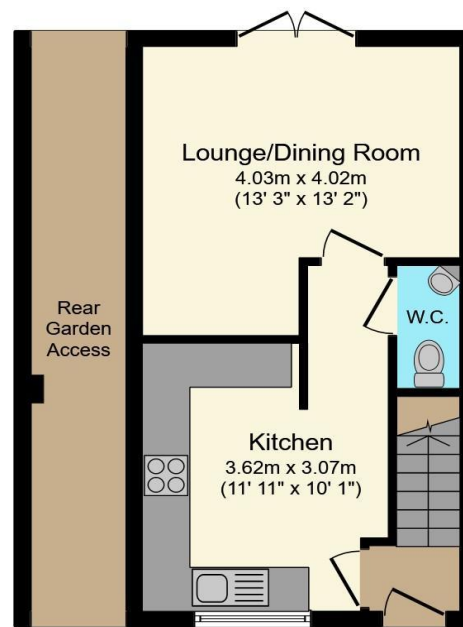
**Bedroom 2:** 3.5m x 2.97m (11'6" x 9'9")

**Bedroom 3:** 2.84m x 2.4m (9'4" x 7'10")

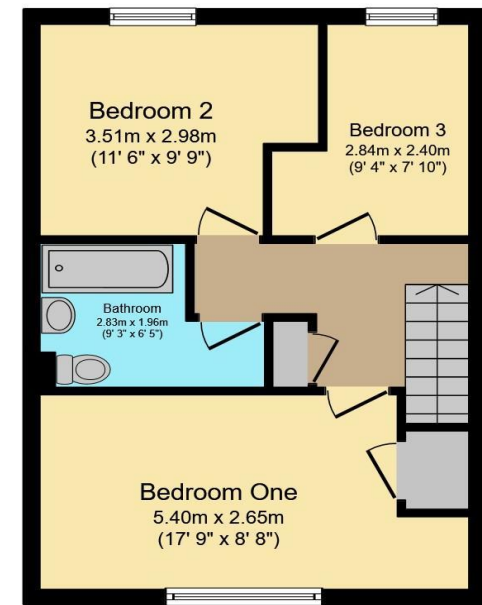
**Bathroom:** 2.82m x 1.96m (9'3" x 6'5")

## Exterior

Landscaped rear garden, parking to front.



Ground Floor



First Floor

Total floor area 84.0 sq. m. (904 sq. ft.) approx

This floor plan is for illustrative purposes only. It is not drawn to scale. Any measurements, floor areas (including any total floor area), openings and orientation are approximate. No details are guaranteed, they cannot be relied upon for any purpose and they do not form part of any agreement. No liability is taken for any error, omission or misstatement. A party must rely upon its own inspection(s).  
Powered by [www.focalagent.com](http://www.focalagent.com)

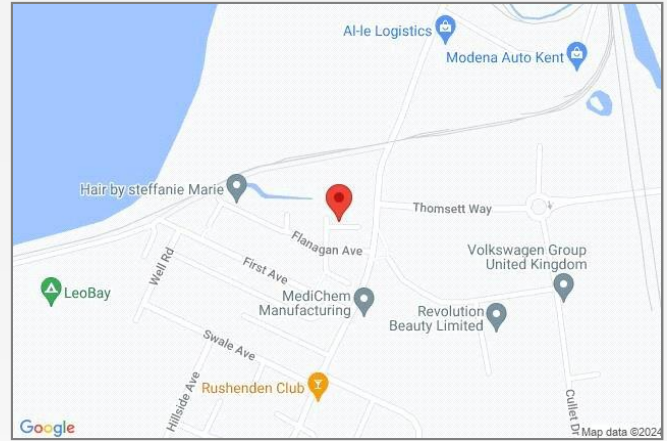






## Property Location

Hardy Close, Queenborough, Kent, ME11 5AU



**FOR MORE INFORMATION  
CONTACT US TODAY.**

01795 479999

Robinson Michael & Jackson  
38 West Street,  
Sittingbourne,  
Kent, ME10 1AP

sittingbourne@robinson-jackson.com

