



Summerhouse Drive | Joydens Wood, Kent, DA2 7PB

 4  2  2 £700,000 Freehold

**ROBINSON-JACKSON**  
Our service will *move* you

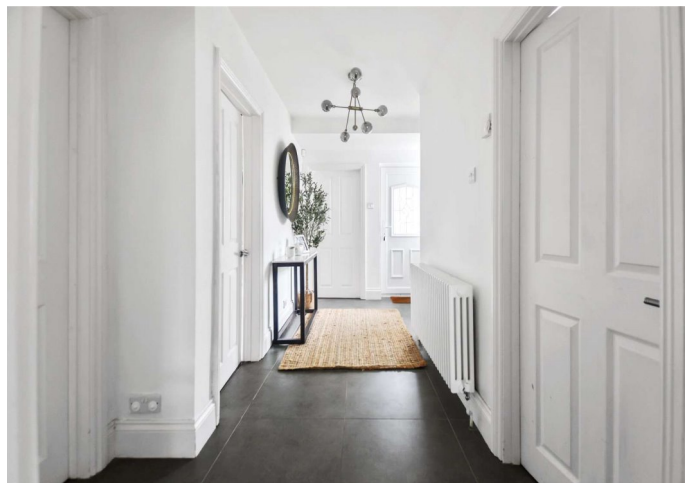


## Summerhouse Drive, Joydens Wood

Within easy access to Primary and Grammar schools, shops, bus routes and the woodland of Joydens Wood is this immaculate 4 double bedroom semi-detached bungalow.

### Property Features

- Council Tax: D
- EPC Rating: D
- Jack n Jill Ensuite
- Utility Closet
- Off Street Parking
- Garage
- Garden
- Side + Rear Extensions



## Interior

**Porch** Door to front. Double glazed window to side. Door through to entrance hall.

**Entrance Hall** Double glazed window to side. Radiator. Tiled Floor.

**Living Room** Open to kitchen/diner. Tiled floor. Underfloor heating.

**Kitchen / Diner** Double glazed sliding doors and windows to rear. Velux window. Range of wall and base units with large centre island with breakfast bar. Integrated fridge freezer, double oven, microwave, dishwasher and wine fridge. Tiled floor. Radiator x2.

**Utility Closet** Plumbed for washing machine.

**Bathroom** Fully tiled. Shower cubicle. Panelled bath with shower attachment. Low level WC. Vanity sink unit. Heated towel rail.

**Bedroom 1** Double glazed bay window to front. Radiator. Wooden flooring.

**Bedroom 2** Velux window. Radiator. Wooden flooring.

**Bedroom 3** Velux window. Radiator. Wooden flooring.

**Bedroom 4** Double glazed window to front. Radiator. Wooden flooring.

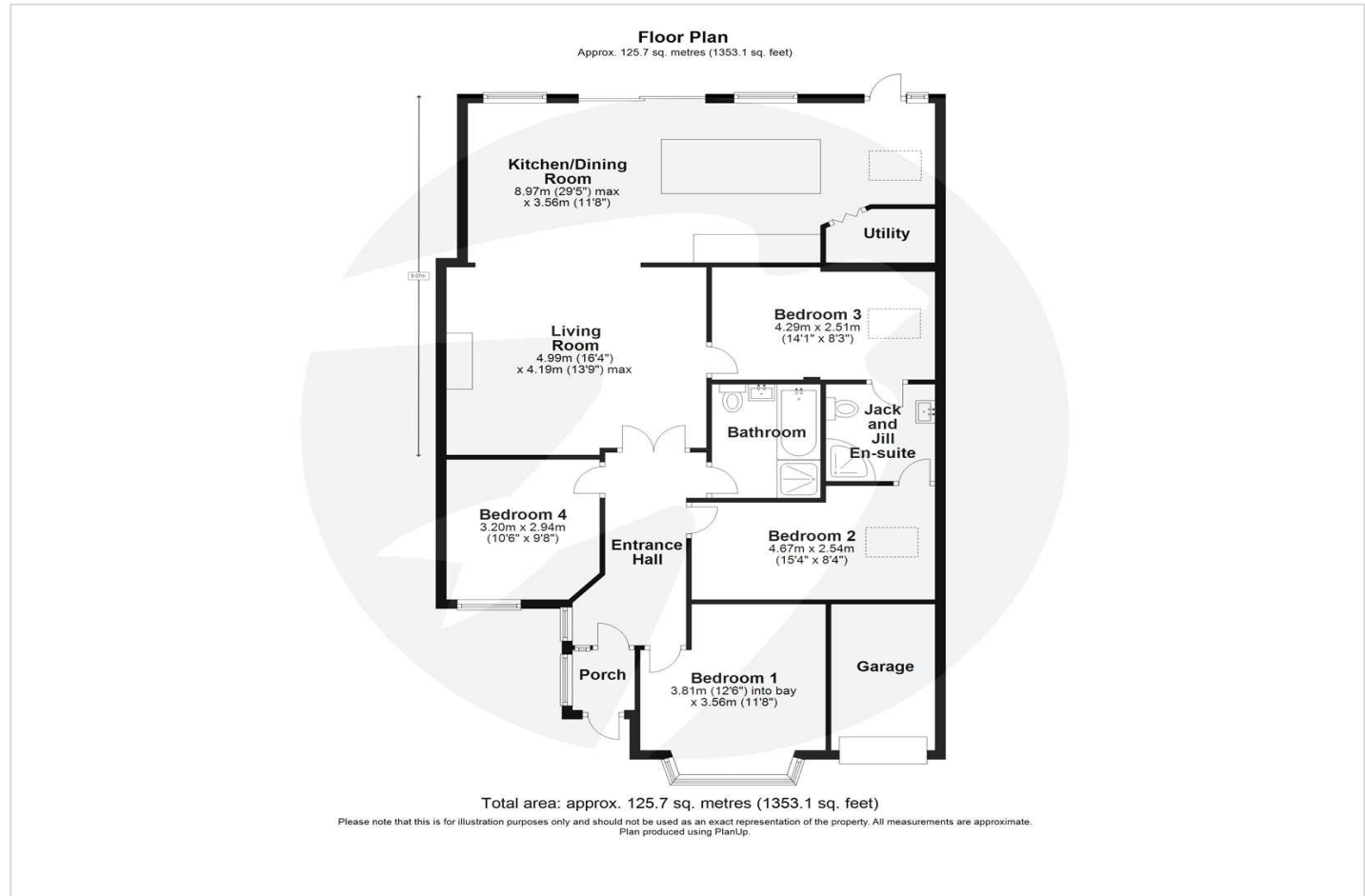
**Jack n Jill Ensuite** Tiled shower cubicle. Low level WC. Vanity sink unit. Heated towel rail. Tiled floor.

## Exterior

**Front** Paved driveway. Lawn area. Shrubs.

**Garden** Patio. Mainly laid to lawn. Outbuilding to rear.

**Garage** Up and over door to front. Power and lighting.

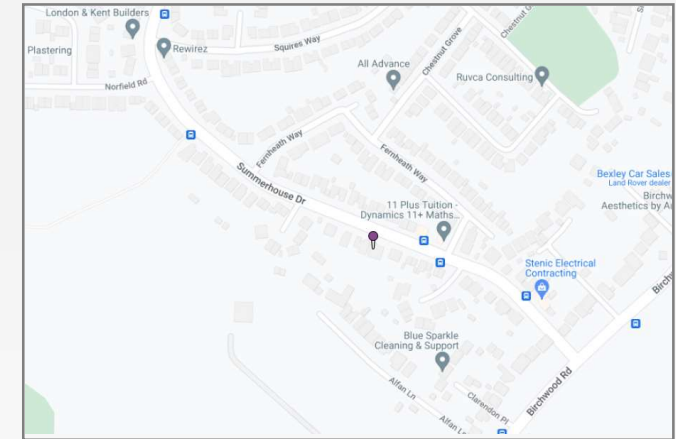






## Property Location

Summerhouse Drive, Joydens Wood, Kent, DA2 7PB



\*All distances from branch postcode. Train time from nearest station.

## Additional Information

Joydens Wood is an 'urban village' located between Bexley and Wilmington, with a tranquil woodland managed by the Woodland Trust at its heart. The woodland spans an impressive 333 acres, and is home to a variety of trees, plants, wooden sculptures and remains dating back to Roman times.

Furthermore, Joydens Wood has a selection of popular primary schools and provides convenient access to both Wilmington Grammar schools. Local family-run businesses include a post office, a newsagents, a dry cleaners, a launderette and a butchers.

**FOR MORE INFORMATION  
CONTACT US TODAY.**

01322 559900  
Robinson Jackson  
77 Bexley High Street,  
Bexley,  
Kent DA5 1JX

[bexley@robinson-jackson.com](mailto:bexley@robinson-jackson.com)

