



Kings Walk Maidstone ME14 1GQ

Leasehold



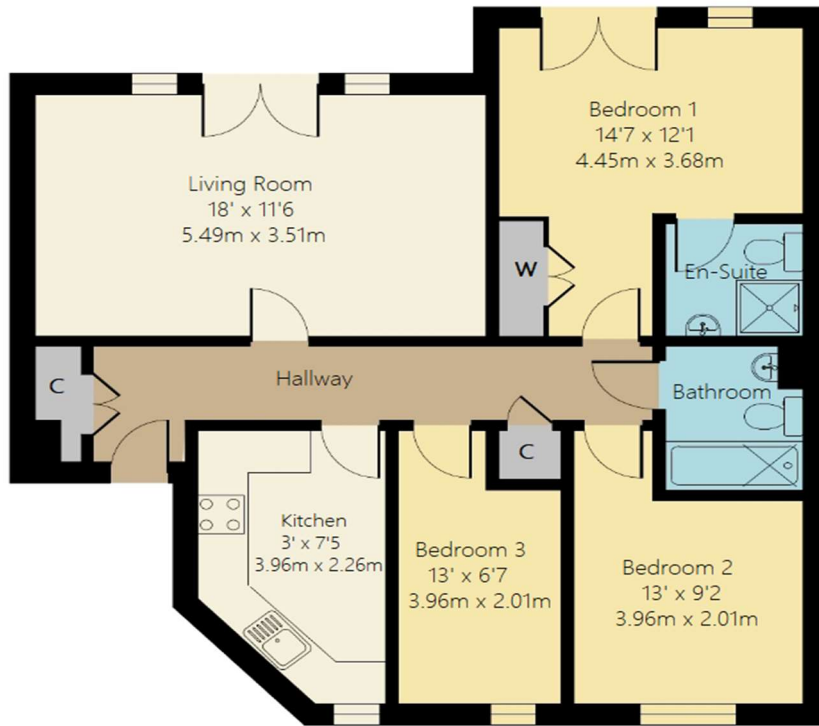
Council Tax: D
EPC Rating: C

Nestled within a coveted gated community, this expansive second-floor apartment boasts generous living space across a single level.

- Three bedrooms
- Two off street parking spaces
- Close to Maidstone town centre
- Generous space throughout
- Walking distance to mainline stations
- Short drive to motorway

Asking Price £290,000

ROBINSON MICHAEL & JACKSON
Our service will *move* you



FOR MORE INFORMATION CONTACT US TODAY.

01622 476666
 Robinson Michael & Jackson
 15A King Street
 Maidstone,
 Kent ME14 1BA
 maidstone@robinson-jackson.com

Interior

Hallway Leads into property, storage cupboards

Living Room 5.49m x 3.5m (18' x 11'6") Windows to the rear, spacious room

Kitchen 0.91m x 2.26m (3' x 7'5") Window to the front, integrated appliances

Bedroom 1 4.45m x 3.68m (14'7" x 12'1") Windows to the rear, built in wardrobe, benefits from en-suite

En-Suite Walk in shower, basin & WC

Bedroom 2 3.96m x 2.8m (13' x 9'2") Window to the front, double bedroom

Bedroom 3 3.96m x 2m (13' x 6'7") Window to the front

Bathroom Shower over bath, basin & WC

Leasehold Information

Time remaining on lease: 103 years remaining

Ground Rent: £100 annually

Service Charge: £350 monthly