



Cumberland Place | London, SE6 1LA



Guide Price: £375,000 - £400,000

Freehold

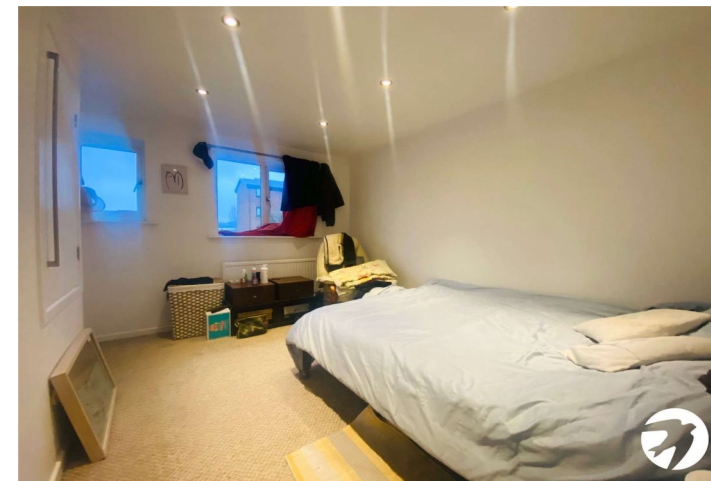
ROBINSON-JACKSON
Our service will *move* you

Cumberland Place, London

A light and airy terraced house situated at Cumberland Place. The property is ideal for first time buyers and investors alike and comprises two bedrooms, reception room, kitchen and bathroom. Additional benefits include private garden, off-street parking and no onward chain.

Property Features

- Council Tax: D
- EPC Rating: D
- No Onward Chain
- Off-Street Parking
- Freehold
- Two Bedrooms
- Reception Room
- Private Garden



Interior

Hall Storage cupboard housing gas metre.

Lounge 3.76m x 3.63m (12'4" x 11'11") Wood frame window and door to rear, under stair storage, radiator, laminate flooring.

Kitchen 3.02m x 1.8m (9'11" x 5'11") Double glazed window to front, range of wall and base units, fitted oven, hob, extractor fan, stainless steel sink with mixer tap, space for fridge and washing machine, tiled flooring.

Bedroom 1 3.66m x 2.95m (12' x 9'8") Double glazed window to front, storage cupboards, radiator, carpet.

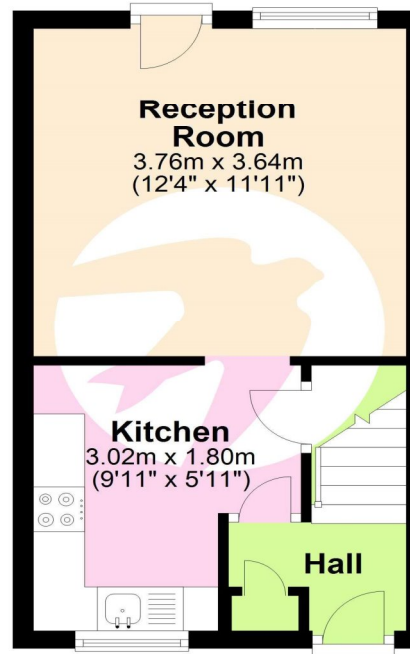
Bedroom 2 3.18m x 2.03m (10'5" x 6'8") Double glazed window to rear, radiator, carpet.

Bathroom 2.29m x 1.47m (7'6" x 4'10") Double glazed window to rear, panel enclosed bath with mixer tap and shower attachment, low level W.C., storage unit housing hand basin with mixer tap, tiled flooring.

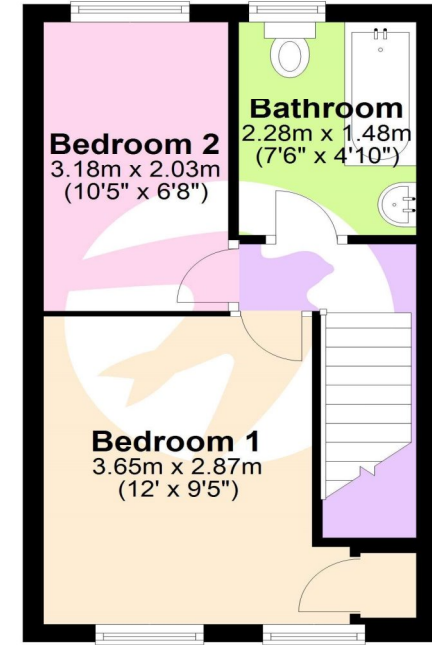
Exterior

Garden Low maintenance, panel wooden fencing.

Ground Floor



First Floor



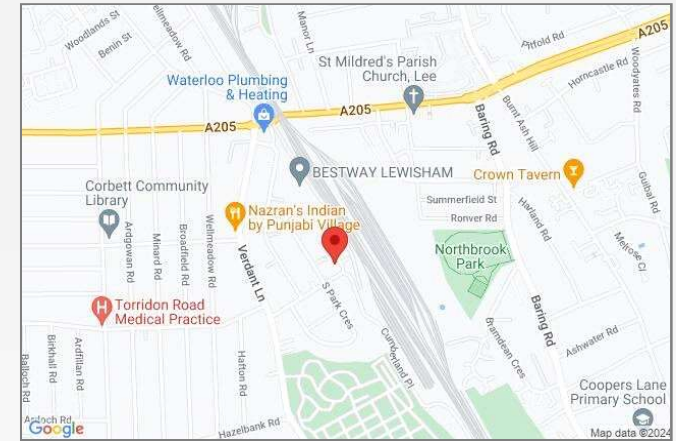
This floor plan is for illustrative purposes only. It is not drawn to scale. Measurements are approximate. Plan produced using PlanUp.





Property Location

Cumberland Place, London, SE6 1LA



Location

Catford is growing in popularity among commuters as journeys from its two mainline stations can take as little as 10 minutes to Central London.

The Broadway Theatre is an impressive Art Deco building, with a regular programme of shows and events. Catford's other premium attraction is Mountsfield Park – one of London's best open spaces and home of the annual People's Day. Catford's Black Cat sculpture remains a well-loved landmark.

Additional Information

Local Authority: London Borough of Lewisham

Council Tax: Band D (£1,926 pa)

**FOR MORE INFORMATION
CONTACT US TODAY.**

020 8698 1234

Robinson Jackson

87 Rushey Green,

Catford

SE6 4AF

jamie.nicol@robinson-jackson.com



These particulars do not form part of an offer or contract and must not be relied upon as statements or representation of fact. Any areas, measurements, journey times or distances are approximate. The text, images, photographs and plans are for guidance only and are not necessarily comprehensive. It should not be assumed that the property has all necessary planning, building regulation or other consents and we have not tested any services, equipment or facilities. References to tenure are based on information supplied by the seller. Buyer should verify all information themselves by inspection or otherwise prior to a legal commitment to purchase. Photos and images are subject to copyright.