



Katherine Gardens | London, SE9 6AN

 3  1  1 OIEO - £550,000 Freehold

**ROBINSON-JACKSON**  
Our service will *move* you



## Katherine Gardens, London

Robinson Jackson are delighted to offer this spacious three bedroom extended semi detached house boasting a 21' x20' kitchen/diner, located with reach of Sutcliffe Park and Eltham mainline station.

### Property Features

- Three bedrooms
- Extended to rear
- Off street parking
- Garage
- Ground floor wc
- A must view





## Interior

**Entrance Hall** Wooden door to front, radiator, understairs storage cupboard, ceiling rose, coving

**Lounge** 4.3m x 4.04m (14'1" x 13'3") Double glazed window to front, radiator, feature fireplace, Bamboo solid wood flooring

**Kitchen/diner** 6.4m x 6.1m (21' x 20') Double glazed window to rear, double glazed french doors to rear, range of wooden wall and base units, island housing sink and drainer unit with mixer tap, space for range cooker, extractor hood, sink with Swan mixer tap, door to WC, Bamboo solid wood flooring.

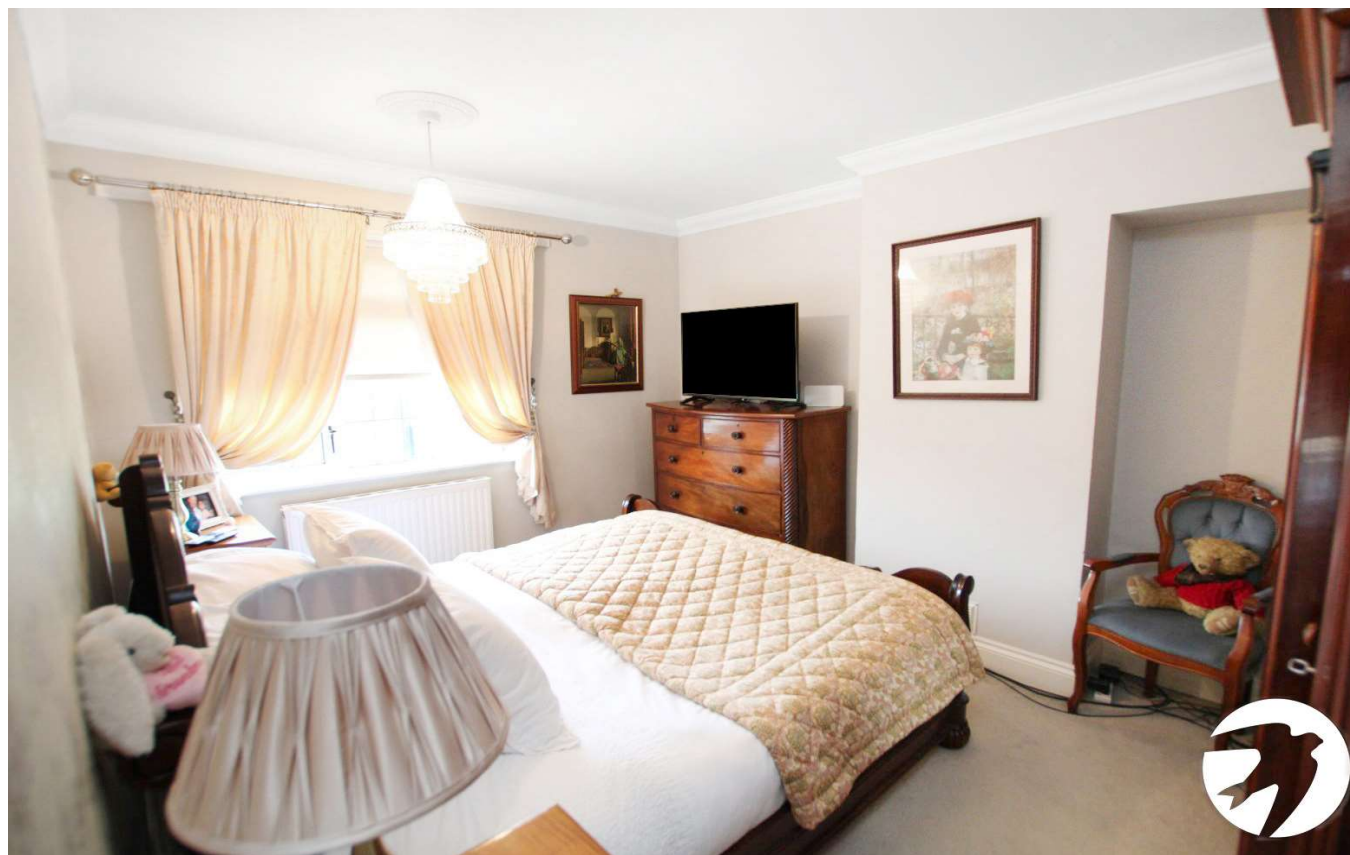
**Ground floor WC** Low level wc

**Bedroom 1** 4.1m x 3.15m (13'5" x 10'4") Double glazed window to front, radiator, carpet

**Bedroom 2** 3.68m x 3.02m (12'1" x 9'11") Double glazed window to rear, radiator, wood laminate flooring

**Bedroom 3** 3.15m x 2.82m (10'4" x 9'3") Double glazed window to front, radiator, dado rail, wood laminate flooring

**Bathroom** Double glazed window to rear, vanity wash hand basin, concealed cistern wc, tiled panelled bath with shower above, tiled walls and floor

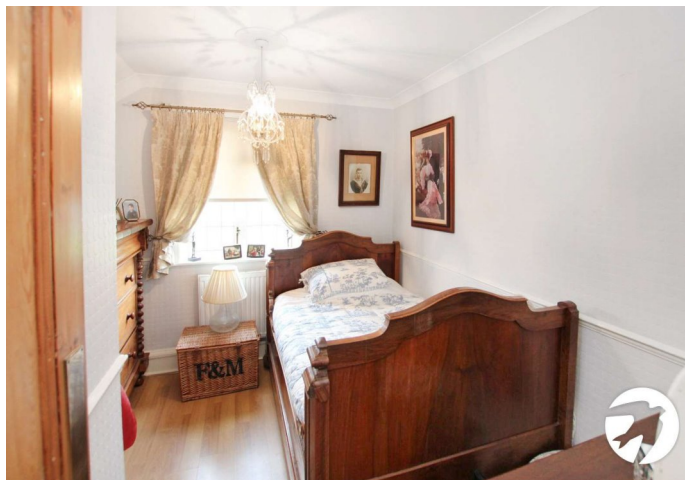


## Exterior

**Garden** Low maintenance York stone paved garden, mature raised borders, 19'4 x 8'8 outbuilding, shed, greenhouse

**Garage** 7.24m x 2.24m (23'9" x 7'4") To side

**Off street parking** To front

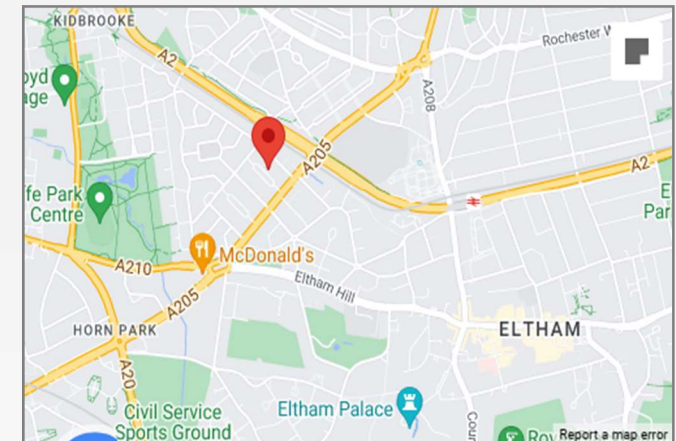






## Property Location

Katherine Gardens, London, SE9 6AN



## Additional Information

Eltham is a popular town in the Royal Borough of Greenwich, with £2 million recently been spent on a High Street revitalisation programme and a new cinema and sky bar complex.

There's a mainline train station offering a direct route to London and the magnificent Art Deco Eltham Palace. The Heritage Restaurant & Bar at the Tudor Barn, a modern leisure centre, the Bob Hope Theatre and Well Hall Pleasaunce can all be found in the town.

- Council Tax: C
- EPC Rating: D

**FOR MORE INFORMATION  
CONTACT US TODAY.**

020 8859 9600

Robinson Jackson  
2-4 Court Yard,  
Eltham,  
London SE9 5PZ

[eltham@robinson-jackson.com](mailto:eltham@robinson-jackson.com)

