



Birkbeck Road | Sidcup, Kent, DA14 4DB



Guide Price £230,000 to £240,000 Leasehold

ROBINSON-JACKSON
Our service will *move* you

Birkbeck Road, Sidcup

Offered to the market chain is this charming one bedroom first floor garden flat, located just moments away from Sidcup High Street. Offering convenience and comfort in a sought-after location.

Property Features

- Council Tax: B
- EPC Rating: D
- Chain Free
- 12ft Lounge/Diner
- Fitted Kitchen
- Shower Room
- Additional WC
- Private Share of Garden



Interior

Entrance Door to side, stairs to landing, carpet.

Landing Carpet.

Lounge 4.1m x 3.76m (13'5" x 12'4") Double glazed window to rear, radiator, carpet.

Kitchen 3.86m x 2.74m (12'8" x 9') Double glazed window to rear, fitted with a range of wall and base units with complementary work surfaces over, stainless steel sink unit with drainer and mixer tap, integrated oven, hob and filter hood above, part tiled walls, vinyl flooring.

WC Low level w.c with integral sink, part tiled walls, tiled flooring.

Bedroom 3.96m x 3.76m (13' x 12'4") Double glazed window to front, radiator, carpet.

En Suite Fitted with a three piece suite comprising, vanity wash hand basin with mixer tap, walk in shower cubicle, low level w.c, tiled walls and flooring.

Exterior

Rear Garden: Private share of garden.

Leasehold Information

Unexpired term of lease: Approximately 119 years

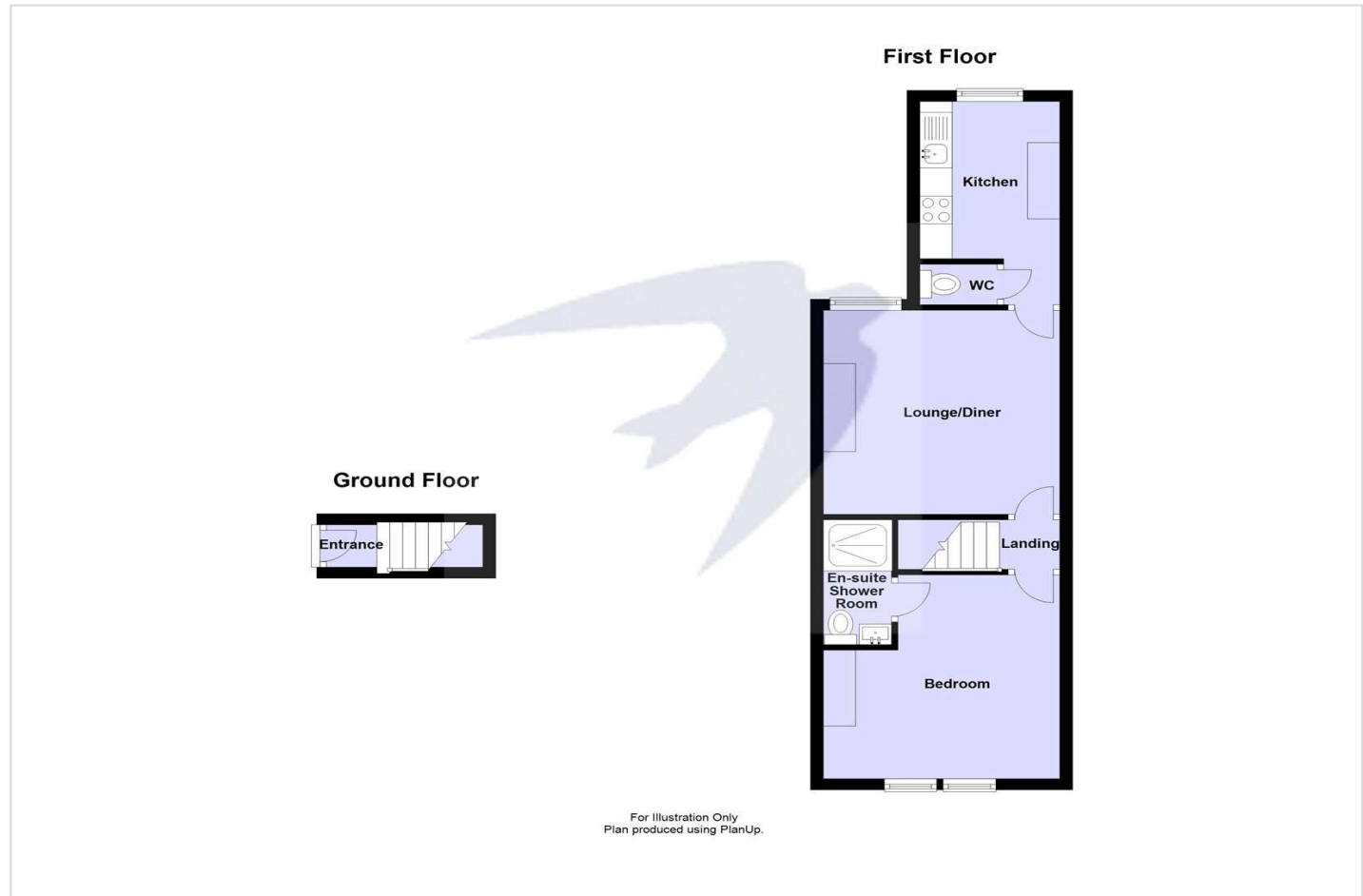
Original start and lease term: Approximately 125 years from 2018

Current ground rent: Approximately £150.00 per annum

Current service charge: Split costs

Next ground rent review: TBC

All the above needs to be verified by your solicitor.





Property Location

Birkbeck Road, Sidcup, Kent, DA14 4DB



Additional Information

Sidcup is located in the London Borough of Bexley. It enjoys a busy high street, a library, supermarkets, a train station, the borough's main hospital, good schools and leisure facilities.

Commuters use Sidcup train station for a direct service into Central London, with journey times from 18 minutes. Sidcup is brimming with pubs and restaurants, with friendly 'locals' serving the community

**FOR MORE INFORMATION
CONTACT US TODAY.**

020 8298 0500
Robinson Jackson
1 & 2 Wellington Parade,
Blackfen,
DA15 9NB
tony.murray@robinson-jackson.com

