



Holmshaw Close | London, SE26 4TH



£425,000

Freehold

ROBINSON-JACKSON
Our service will *move* you

Holmshaw Close, London

Discover this charming 3- bedroom end of terrace house nestled in a Cul de sac. Boasting a single-owner history, this property offers spacious interiors with generously sized rooms. Enjoy the convenience of off-street parking and the proximity to the High Street and Retail Park. Additionally, indulge in the leisurely strolls at the nearby Mayow Park.

Property Features

- Council Tax: D
- EPC Rating: D
- Three Bedrooms
- Modern End of Terrace Family Home
- Freehold
- Off Street Parking
- Direct Access to Rear Garden
- Double Glazing
- Laminate Flooring Where Stated
- Ample Storage
- Comfortable Family Home
- Excellently located for Sydenham Station
- Conveniently located for Bell Green Retail Park, the award winning Mayow Park and Waterlink Way



Interior

Entrance Hall Laminate flooring, radiator

Ground Floor WC Double glazed window to rear, wash hand basin, laminate flooring, radiator

Lounge Double glazed window to front, laminate flooring, radiator

Kitchen Dining Room Double glazed window to rear, range of wall and base units, laminate work surface, stainless steel sink, space for oven, space for fridge/freezer, washing machine plumbed for, laminate flooring, radiator

Master Bedroom Double glazed window to front, built in cupboard, carpet, radiator

Second Bedroom Double glazed window to rear, built in cupboard, carpet, radiator

Third Bedroom Double glazed window to front, built in cupboard, carpet, radiator

Bathroom Double glazed window to rear, panelled bath, wash hand basin, low flush WC, laminate flooring, radiator

Garden Paved, Rear access

Exterior

Residents parking

Direct access to rear garden mainly paved with rear access

Additional Information

Double glazing

Central heating

Laminate flooring where stated

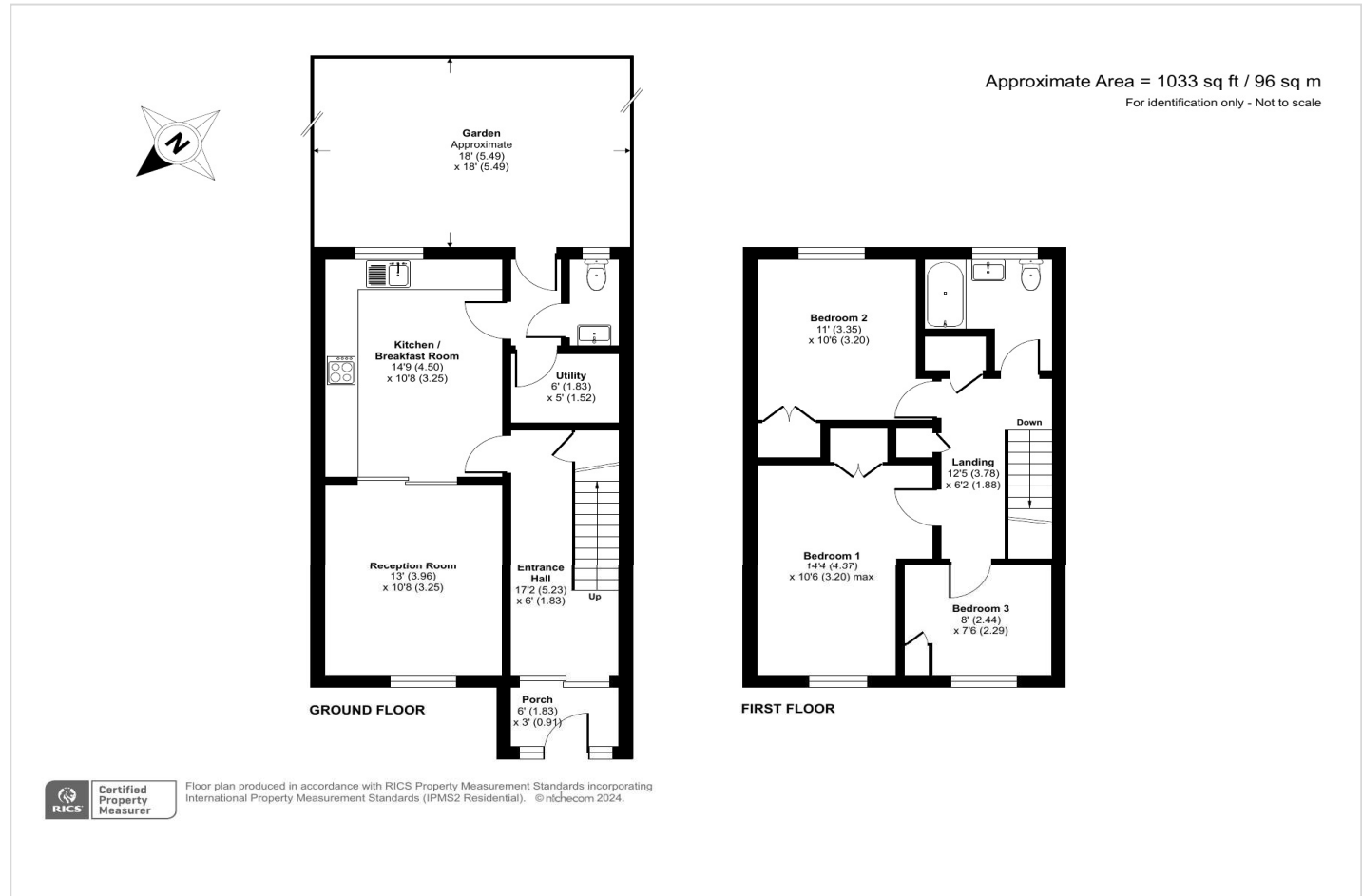
Ample storage

Freehold

Comfortable family home

Excellently located for Sydenham Station

Conveniently located for Bell Green Retail Park, the award winning Mayow Park and Waterlink Way





Property Location

Holmshaw Close, London, SE26 4TH



Horniman Museum & Gardens Crystal Palace Canada Water Station Train to London Bridge

*All distances from branch postcode. Train time from nearest station.

FOR MORE INFORMATION CONTACT US TODAY.

020 8776 6660
Robinson Jackson
256 Kirkdale,
Sydenham,
London SE26 4NL
sydenham@robinson-jackson.com



These particulars do not form part of an offer or contract and must not be relied upon as statements or representation of fact. Any areas, measurements, journey times or distances are approximate. The text, images, photographs and plans are for guidance only and are not necessarily comprehensive. It should not be assumed that the property has all necessary planning, building regulation or other consents and we have not tested any services, equipment or facilities. References to tenure are based on information supplied by the seller. Buyer should verify all information themselves by inspection or otherwise prior to a legal commitment to purchase. Photos and images are subject to copyright.