



Cumberland Place | London, SE6 1LB



Guide Price: £230,000 - £250,000

Leasehold

ROBINSON-JACKSON
Our service will *move* you

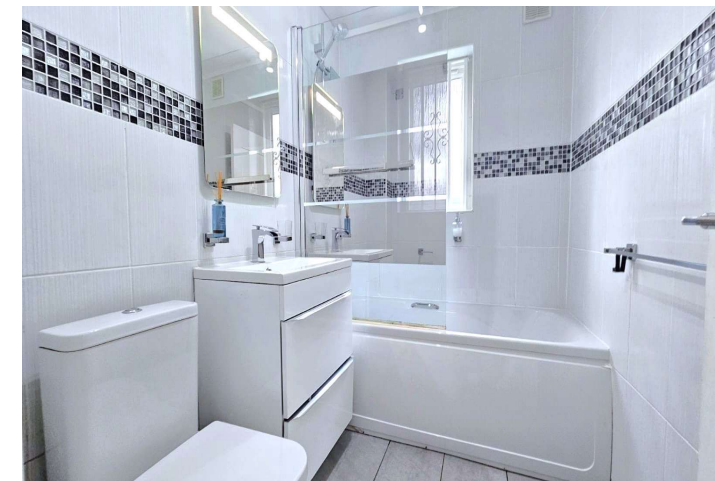
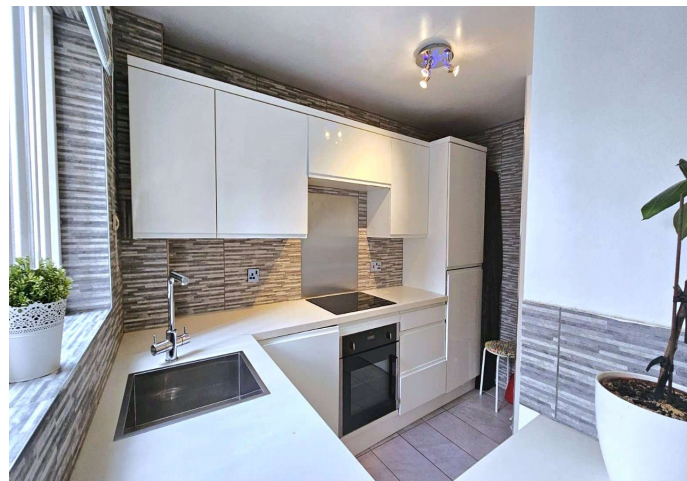
Cumberland Place, London

Robinson-Jackson are pleased to bring to the market this ground floor purpose built flat on Cumberland Place. The property consists of a reception room, one double bedrooms, bathroom and modern kitchen. The property is well located for Hither Green Station, shops, and schools.

Please call or email to book your appointment today.

Property Features

- Council Tax: C
- EPC Rating: D
- Ground Floor Flat
- One Double Bedroom
- Modern Kitchen
- Allocated Parking



Interior

Reception Room 5.26m x 4.7m (17'3" x 15'5")

Double glazed window to front, radiator, tiled floor.

Kitchen 2.5m x 3.25m (8'2" x 10'8") Double glazed window to rear, range of wall and base units with work surface over, stainless steel sink with mixer tap, oven, induction hob, integrated fridge/freezer, opening to reception room, tiled walls, tiled floor.

Bathroom Double glazed window to rear, panelled bath with mixer tap and shower over, hand basin with vanity unit under, low level w.c., tiled walls, tiled floor.

Bedroom 1 4.04m x 2.87m (13'3" x 9'5")

Double glazed window to front, radiator, tiled floor.

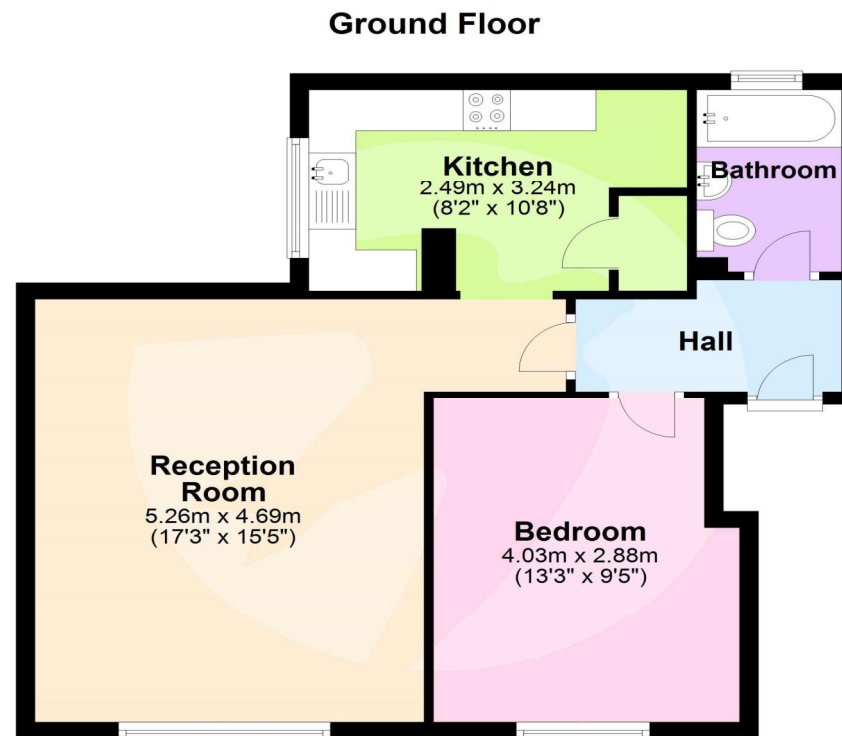
Leasehold Information

Lease Term: 155 years remaining*

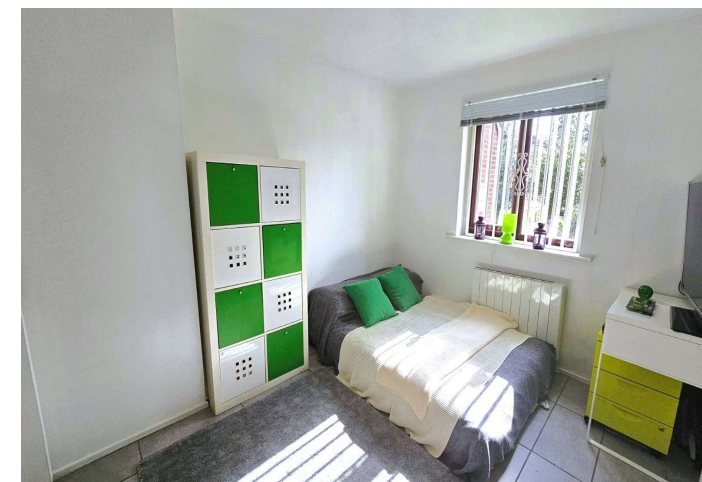
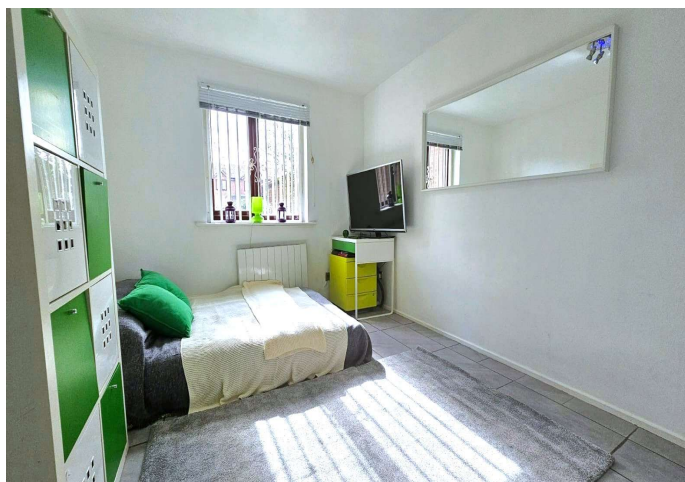
Service Charge: £2112 per annum (includes water charge)*

Ground Rent: £100 per annum*

(*to be verified by Vendors Solicitor)



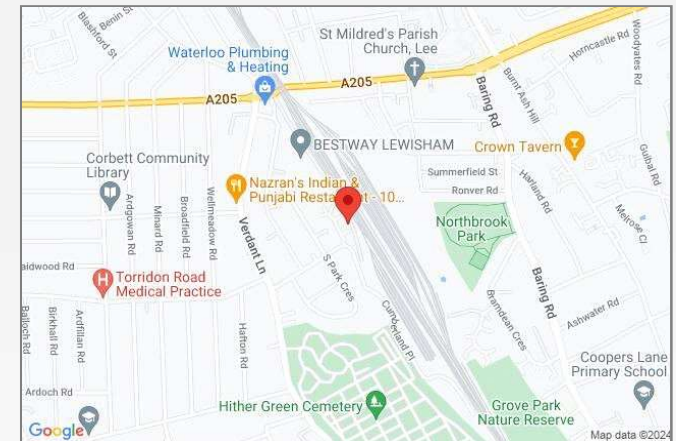
This floor plan is for illustrative purposes only. It is not drawn to scale. Measurements are approximate. Plan produced using PlanUp.





Property Location

Cumberland Place, London, SE6 1LB



Location

Catford is growing in popularity among commuters as journeys from its two mainline stations can take as little as 10 minutes to Central London.

The Broadway Theatre is an impressive Art Deco building, with a regular programme of shows and events. Catford's other premium attraction is Mountsfield Park – one of London's best open spaces and home of the annual People's Day. Catford's Black Cat sculpture remains a well-loved landmark.

Additional Information

Local Authority: London Borough of Lewisham

Council Tax: Band C (£1,812 pa)

EPC Rating: D

Parking: Allocated Parking Space

Electric Supply: Yes

Water Supply: Yes

Sewerage: Drainage to public sewer

Broadband: Standard, superfast, ultrafast available

Networks: Community Fibre, Openreach

Mobile Signal: Good coverage - EE, O2, Three, Vodafone

**FOR MORE INFORMATION
CONTACT US TODAY.**

020 8698 1234

Robinson Jackson

87 Rushey Green,

Catford

SE6 4AF

jamie.nicol@robinson-jackson.com

