



Fieldfare Lane | Greenhithe, Kent, DA9 9UP



Guide Price: £270,000 to £280,000 Leasehold

ROBINSON-JACKSON
Our service will *move* you

Fieldfare Lane, Greenhithe

Robinson-Jackson are delighted to offer this chain free apartment to the market in the popular development of Vantage Point on Fieldfare Lane in Greenhithe, Kent.

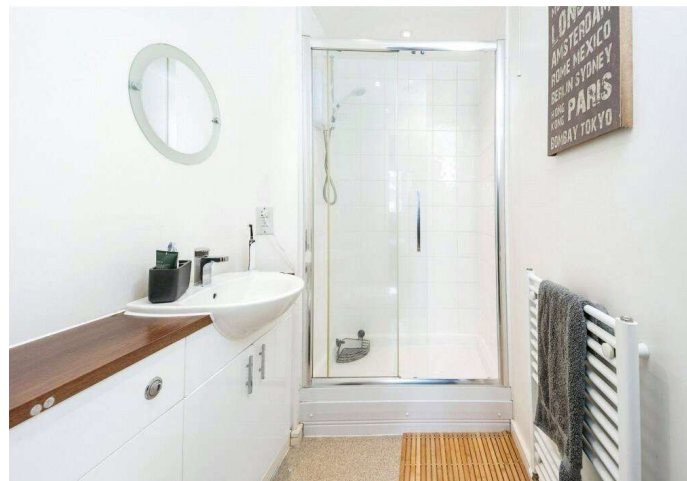
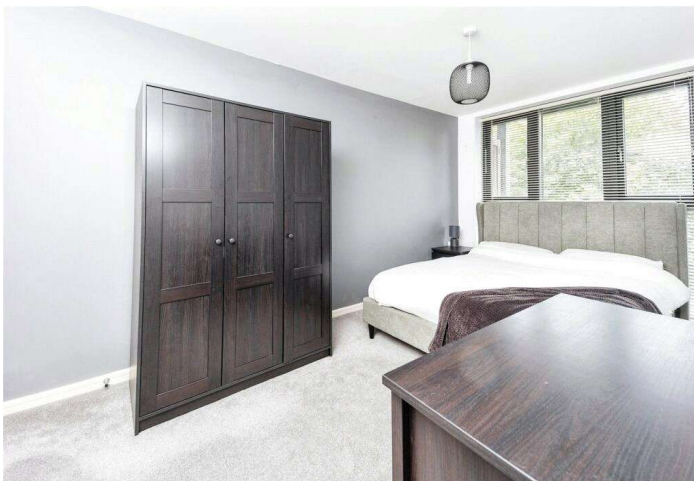
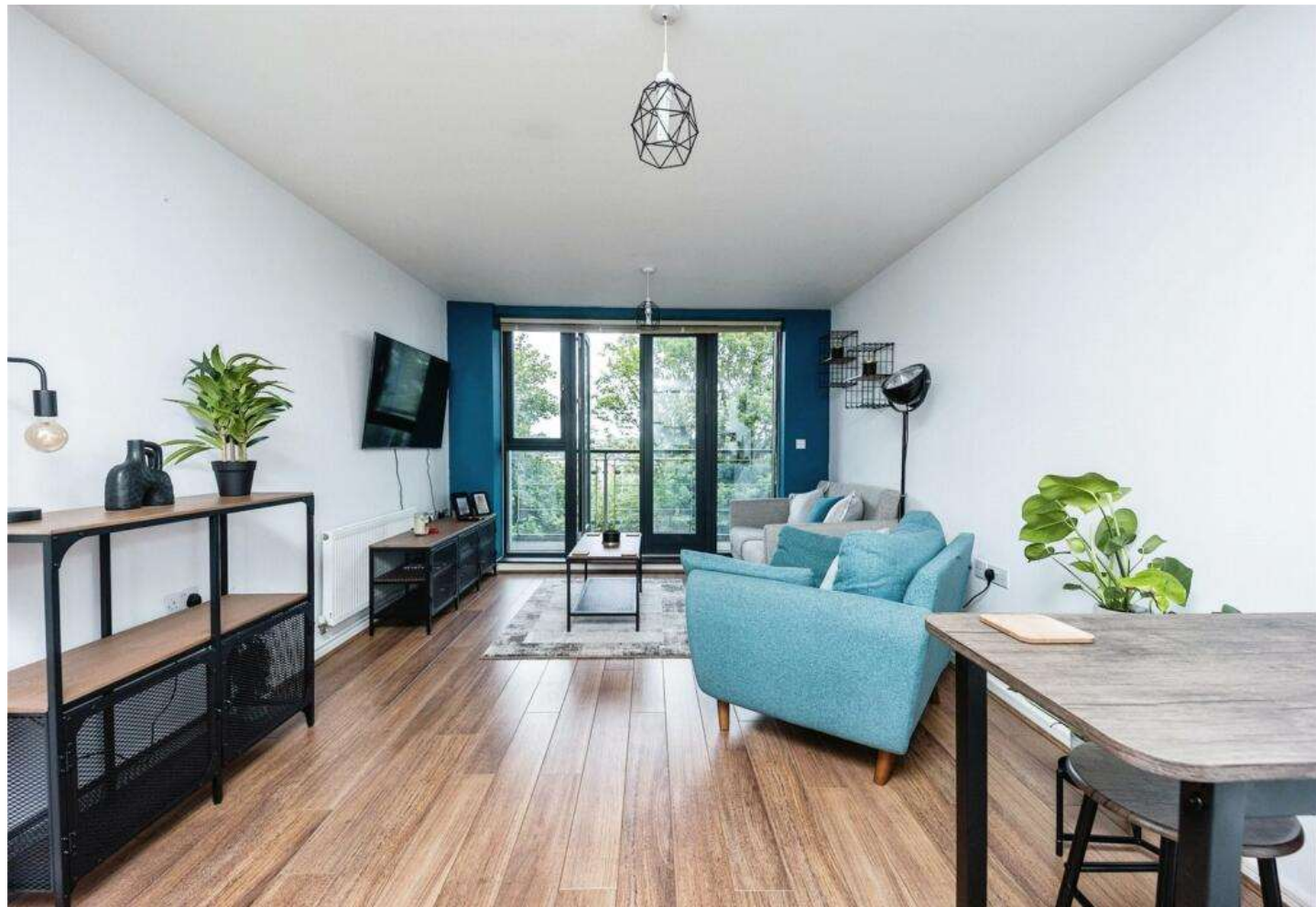
This property is ready to move straight into and has no onward chain. This 2-bedroom contemporary apartment was built in 2012. The property comprises of an entrance hallway which includes storage, bathroom, ensuite, two bedrooms and an open plan living area/kitchen.

Externally the property offers a full length balcony with views of greenery. In addition well maintained communal grounds and a private car park with an allocated bay.

This is truly a MUST SEE home and internal viewing is definitely advised to see everything this property has to offer.

Property Features

- Chain Free
- En-Suite
- Parking
- Balcony
- Long Lease
- Open Plan Living
- Views



Interior

Open Plan Living: 7.2m x 3.2m (23'7" x 10'6") Lounge Area: Double glazed windows and door leading to balcony. Two radiators. Laminate flooring.

Kitchen Area: Range of matching wall and base units with complimentary Quartz work surfaces over. Stainless steel sink with drainer. Integrated electric oven, gas hob and extractor fan. Integrated fridge freezer. Spotlights. Vinyl flooring.

Bedroom One: 4.7m x 3.3m (15'5" x 10'10") Double glazed window. Radiator. Carpet.

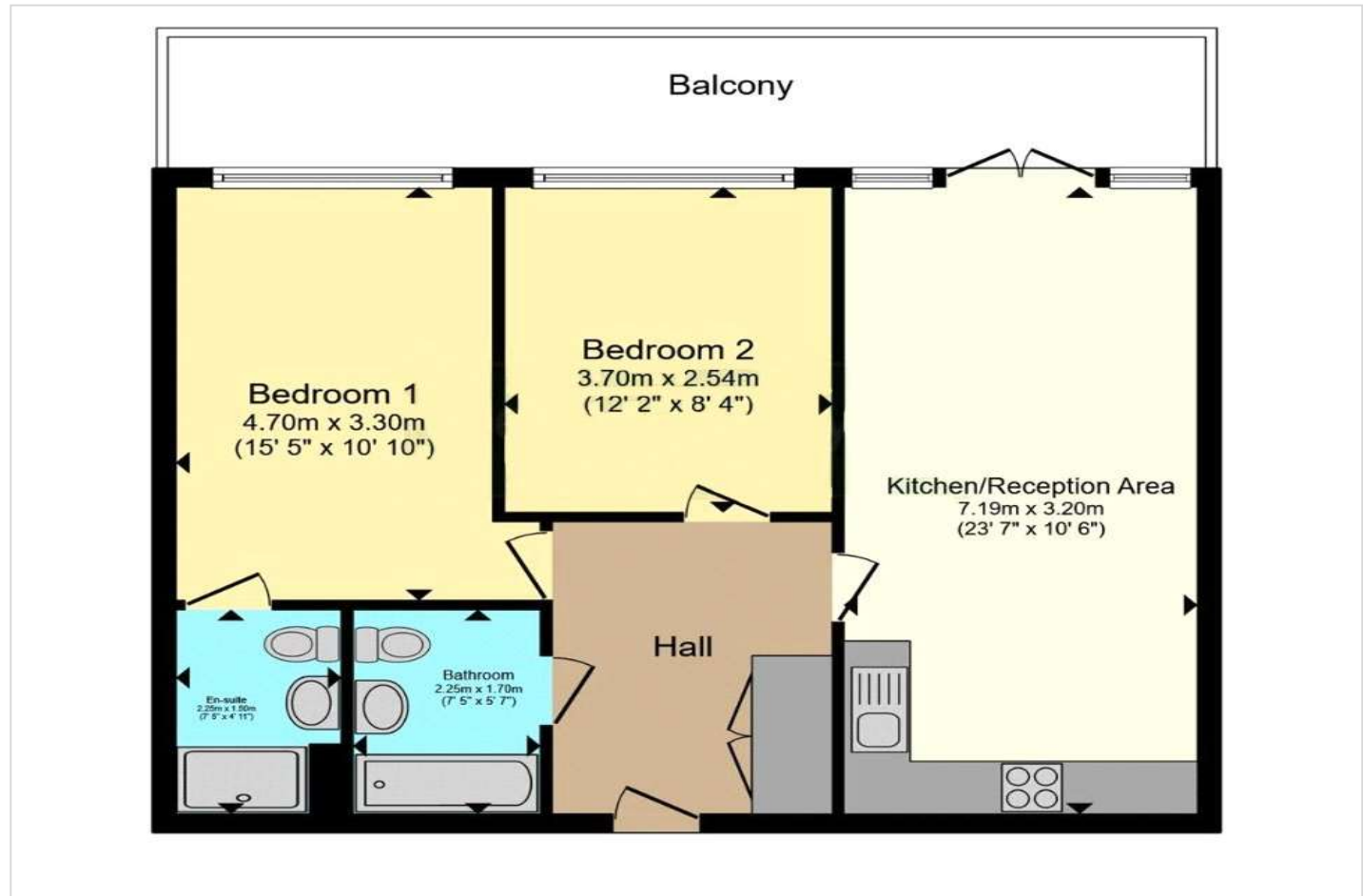
Ensuite: 2.26m x 1.5m (7'5" x 4'11") Low level WC. Vanity wash hand basin. Shower cubicle. Heated towel rail. Spotlights. Part tiled walls. Vinyl flooring.

Bedroom Two: 3.7m x 2.54m (12'2" x 8'4") Double glazed window. Radiator. Carpet.

Bathroom: 2.26m x 1.7m (7'5" x 5'7") Low level WC. Vanity wash hand basin. Panelled bath with fitted shower and shower screen. Heated towel rail. Part tiled walls. Vinyl flooring.

Exterior

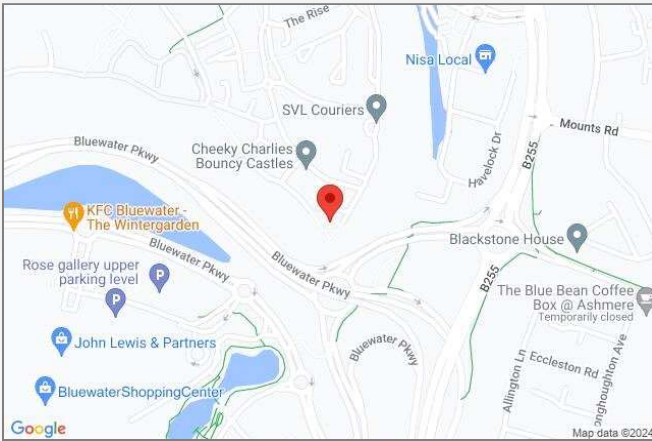
Allocated parking bay.





Property Location

Fieldfare Lane, Greenhithe, Kent, DA9 9UP



Additional Information

Dartford Borough Council - Band D
Total floor area: 59 sq. metres

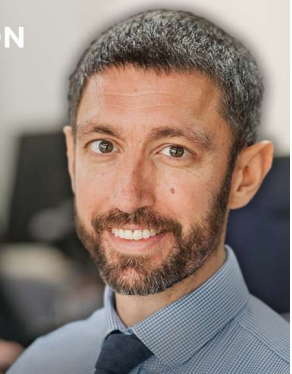
Leasehold Information

Lease created: 2007 for 250 years
Remaining term on lease: 233 years (2024)
Current annual ground rent: £350pa
Current annual service charge: £1800pa

(All information regarding lease term and service charges have been provided by the seller and should be verified by your solicitor).

FOR MORE INFORMATION CONTACT US TODAY.

01322 624440
Robinson Jackson
39 High Street,
Swanscombe
Kent,
DA10 0AG
swanscombe@robinson-jackson.com



These particulars do not form part of an offer or contract and must not be relied upon as statements or representation of fact. Any areas, measurements, journey times or distances are approximate. The text, images, photographs and plans are for guidance only and are not necessarily comprehensive. It should not be assumed that the property has all necessary planning, building regulation or other consents and we have not tested any services, equipment or facilities. References to tenure are based on information supplied by the seller. Buyer should verify all information themselves by inspection or otherwise prior to a legal commitment to purchase. Photos and images are subject to copyright.