



Shirehall Road | Hawley, Dartford, DA2 7RP

 3  2  2

Asking Price £650,000
Freehold

ROBINSON-JACKSON 
Our service will *move* you

Shirehall Road, Hawley

Viewing is a must to fully appreciate what is on offer from this very well maintained family home. In addition the property offers secure parking for numerous cars and a store room to the rear.

Property Features

- Council Tax: D
- EPC Rating: D
- Open Plan Kitchen Living Room
- Conservatory With Bi folding Doors To The Garden
- Secure Electric Gated Parking Area To The Rear With Garage / Workshop.
- En-suite To Bedroom Two And Built In Wardrobe
- Air Conditioning Throughout The Kitchen
- Views Across Fields To The Front



Interior

Entrance Porch: Double glazed entrance door. Tiled floor.

Entrance Hall: Double glazed entrance door. Radiator. Wood effect flooring.

Bedroom Two: Double glazed bay window to front. Covered ceiling. Radiator. Carpet. Built in wall in wardrobe. Door to en-suite shower room. Air conditioning. Carpet.

En-suite Shower Room: Spotlights. Tiled shower cubicle. Low level WC. Vanity wash hand basin. Tiled floor.

Bedroom One: Double glazed bay window to front. Covered ceiling. Air conditioning. Radiator. Wood effect flooring.

Bathroom: Frosted double glazed window to side. Tiled walls. Low level WC. Vanity wash hand basin. Panel bath with shower attachment and separate hand held shower. Heated towel rail.

Bedroom Three: Double glazed window to side. Covered ceiling. Radiator. Built in wardrobe. Wood effect flooring. Access to loft room.

Loft Room: Glazed window to front. Carpet. Eaves storage.

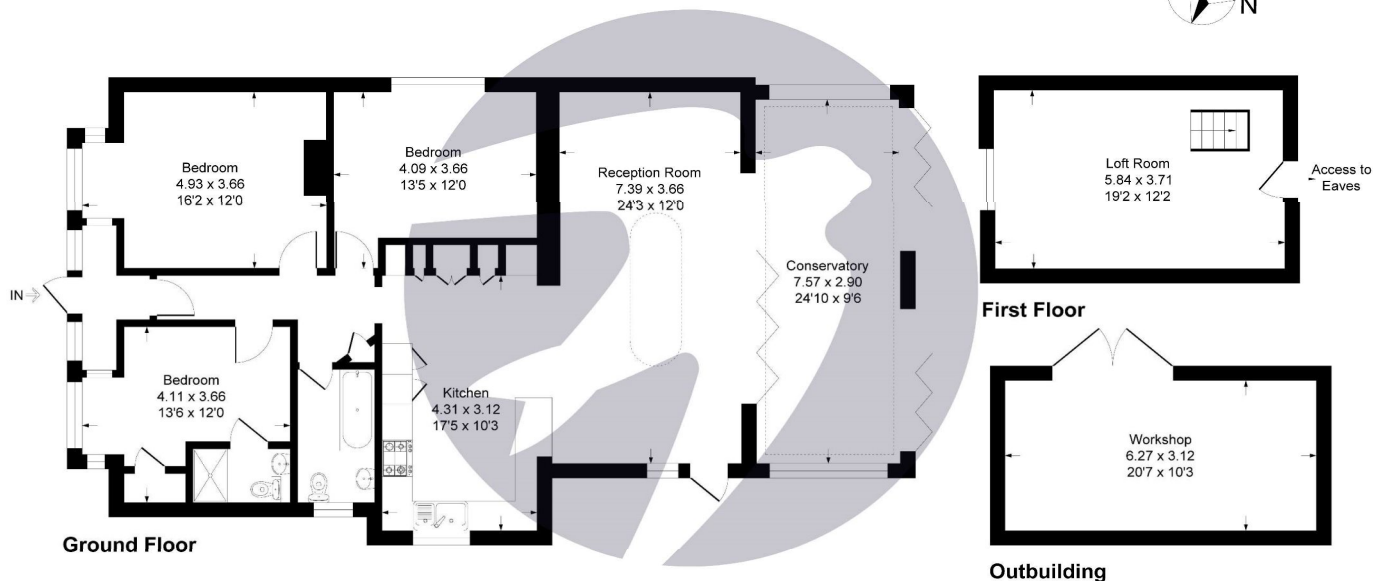
Kitchen Area: Double glazed window to side. Matching range of wall and base units with complimentary work-surfaces. Integrated sink unit. Stainless steel cooker hood. Four ring electric hob. Built in stainless steel electric double oven. Built in stainless steel microwave. Built in stainless steel coffee machine. Cupboard housing boiler. Breakfast bar. Wood effect flooring. Open to living room.

Living Room: Frosted double glazed door to side. Skylight. Spotlights. Speakers. Air conditioning. Radiator. Wood effect flooring. Bi-folding doors leading to the dining room / conservatory.

Dining Room / Conservatory: Bi-folding doors to both the garden and living room. Air conditioning. Tiled floor.

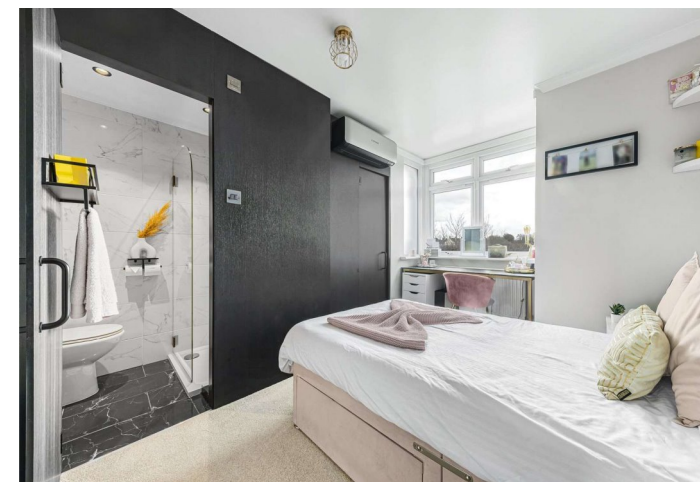
Shirehall Road, DA2

Approximate Gross Internal Area 156.0 sq m / 1680 sq ft
Outbuilding Area 19.6 sq m / 211 sq ft
Total Area 175.6 sq m / 1891 sq ft



**ROBINSON
JACKSON**

This plan is for layout guidance only. Not drawn to scale unless stated. Windows and door openings are approximate. Whilst every care is taken in the preparation of this plan, please check all dimensions, shapes and compass bearings before making any decisions reliant upon them.
Produced By Planpix





Exterior

Front Garden: Fenced and gated. Pathway to front. Shingle. Side pedestrian access. Outside power point. Gas meter.

Rear Garden: Artificial lawn. Covered area with hot tub which is negotiable within the sale. Side pedestrian access. Outside power points . Raised flower bed. Rear electric gated parking for numerous cars. Secure storage shed / garage.

Parking: To the rear for numerous vehicles. Electric gate and bollards.

Potential for an additional property / annexe subject to council approval. Electric charging point.

Additional Information

The boiler is located in the kitchen.

The garden is East facing.

The owners are looking for another property.

The owners have lived in the property for 9 years.

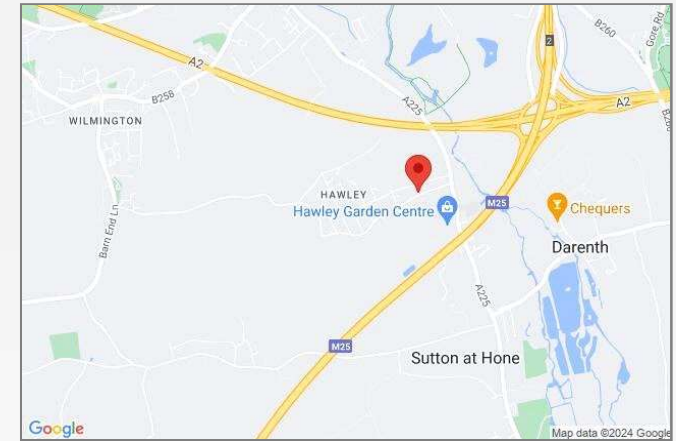
The property was built in 1950.

Council Tax Dartford Band D

The property is connected to mains gas electric and water and has mains drainage.

Property Location

Shirehall Road, Hawley, Dartford, DA2 7RP



**FOR MORE INFORMATION
CONTACT US TODAY.**

01322 281281

Robinson Jackson
22 Market Street,
Dartford,
Kent DA1 1EZ

dartford@robinson-jackson.com

