



Castle Street | Greenhithe, Kent, DA9 9AB



Asking Price: £270,000 Freehold

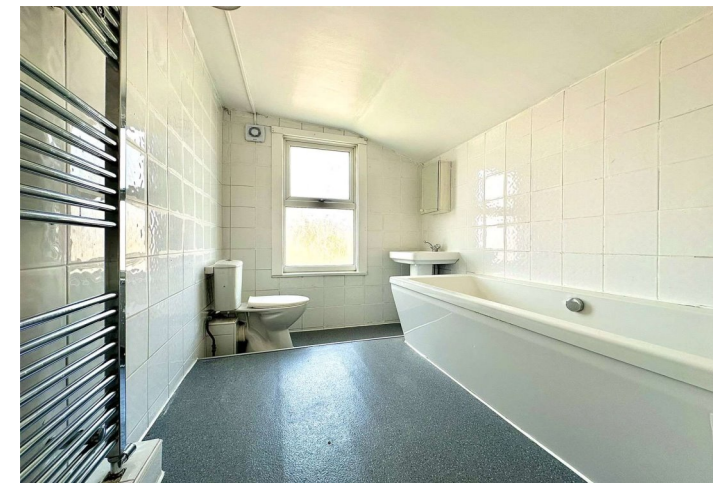
ROBINSON-JACKSON
Our service will *move* you

Castle Street, Greenhithe

Robinson Jackson are pleased to present this charming period terraced house located in Greenhithe. The property features two double bedrooms, offering a comfortable and cosy living space. The house boasts a 50' garden, perfect for relaxing or entertaining guests. Permit parking is available, providing convenience and peace of mind. With no chain, this property is ready to move into or could be a great investment opportunity for rental purposes. Additional features include a ground floor cloakroom, easy access to Greenhithe train station, A2 & M25 motorway links and Bluewater Shopping Centre. Don't miss the chance to own this beautiful home in a sought-after location. Contact us now to arrange a viewing and make this property yours today.

Property Features

- Two Double Bedrooms
- Two Reception Rooms
- Downstairs Cloakroom
- Upstairs Bathroom
- 50' Rear Garden
- Permit Parking to Front



Interior

Lounge: 3.5m x 3.18m (11'6" x 10'5") Entrance door. Double glazed window to front. Radiator. Carpet. Stairs to first floor.

Dining Room: 3.48m x 2.97m (11'5" x 9'9") Double glazed window to rear. Feature fireplace. Storage cupboard. Carpet.

Kitchen: 2.51m x 1.93m (8'3" x 6'4") Double glazed window to side. Range of matching wall and base units with complimentary work surface over. Space for cooker. Space for fridge freezer. Plumbed for washing machine. Laminate flooring.

Lobby: Double glazed door to rear. Radiator. Access to WC.

Cloakroom: Frosted double glazed window to rear. Low level WC. Vanity wash hand basin. Boiler. Vinyl flooring.

Bedroom One: 3.5m x 3.18m (11'6" x 10'5") Double glazed window to front. Radiator. Storage cupboard. Laminate flooring.

Bedroom Two: 3.5m x 2.97m (11'6" x 9'9") Double glazed window to rear. Radiator. Laminate flooring.

Bathroom: 2.51m x 1.93m (8'3" x 6'4") Frosted double glazed window to rear. Low level WC. Pedestal wash hand basin. Panelled bath. Heated towel rail. Tiled walls. Vinyl flooring. Extractor fan.

Ground Floor
Approx. 44.7 sq. metres (481.4 sq. feet)



First Floor
Approx. 33.7 sq. metres (362.5 sq. feet)



Total area: approx. 75.8 sq. metres (816.0 sq. feet)





Exterior

Approximately 50' Rear Garden. Lawn. Outside tap. Shed.

Additional Information

Dartford Borough Council - Tax Band B

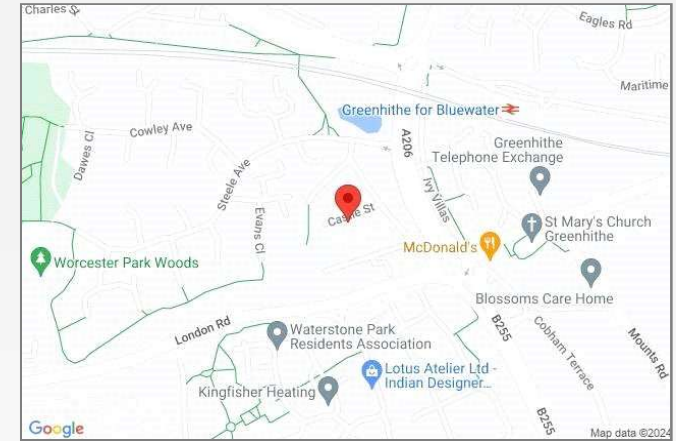
Total floor area: 63 sq. metres

The boiler is located in the cloakroom

Permit parking spaces available.

Property Location

Castle Street, Greenhithe, Kent, DA9 9AB



FOR MORE INFORMATION
CONTACT US TODAY.

01322 624440

Robinson Jackson
39 High Street,
Swanscombe
Kent,
DA10 0AG

swanscombe@robinson-jackson.com

