



Castle Street | Greenhithe, Kent, DA9 9AB



Asking Price: £280,000 Freehold

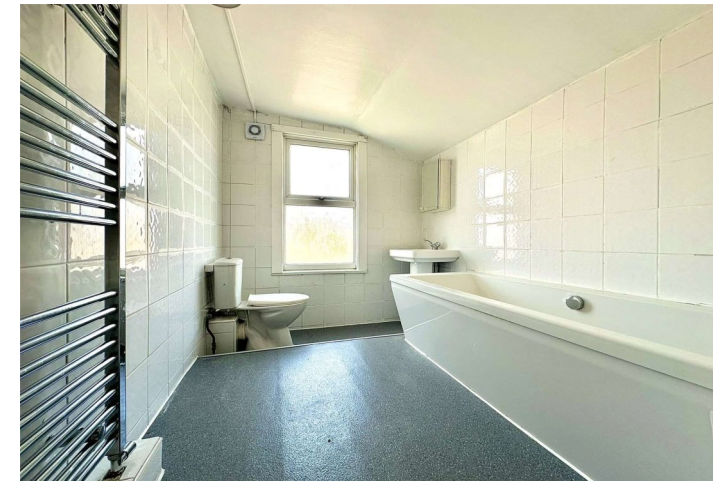
**ROBINSON-JACKSON**  
Our service will *move* you

## Castle Street, Greenhithe

Robinson Jackson are pleased to present this charming period terraced house located in Greenhithe. The property features two double bedrooms, offering a comfortable and cosy living space. The house boasts a 50' garden, perfect for relaxing or entertaining guests. Permit parking is available, providing convenience and peace of mind. With no chain, this property is ready to move into or could be a great investment opportunity for rental purposes. Additional features include a ground floor cloakroom, easy access to Greenhithe train station, A2 & M25 motorway links and Bluewater Shopping Centre. Don't miss the chance to own this beautiful home in a sought-after location. Contact us now to arrange a viewing and make this property yours today.

## Property Features

- Two Double Bedrooms
- Two Reception Rooms
- Downstairs Cloakroom
- Upstairs Bathroom
- 50' Rear Garden
- Permit Parking to Front



## Interior

**Lounge:** 3.5m x 3.18m (11'6" x 10'5") Entrance door. Double glazed window to front. Radiator. Carpet. Stairs to first floor.

**Dining Room:** 3.48m x 2.97m (11'5" x 9'9") Double glazed window to rear. Feature fireplace. Storage cupboard. Carpet.

**Kitchen:** 2.51m x 1.93m (8'3" x 6'4") Double glazed window to side. Range of matching wall and base units with complimentary work surface over. Space for cooker. Space for fridge freezer. Plumbed for washing machine. Laminate flooring.

**Lobby:** Double glazed door to rear. Radiator. Access to WC.

**Cloakroom:** Frosted double glazed window to rear. Low level WC. Vanity wash hand basin. Boiler. Vinyl flooring.

**Bedroom One:** 3.5m x 3.18m (11'6" x 10'5") Double glazed window to front. Radiator. Storage cupboard. Laminate flooring.

**Bedroom Two:** 3.5m x 2.97m (11'6" x 9'9") Double glazed window to rear. Radiator. Laminate flooring.

**Bathroom:** 2.51m x 1.93m (8'3" x 6'4") Frosted double glazed window to rear. Low level WC. Pedestal wash hand basin. Panelled bath. Heated towel rail. Tiled walls. Vinyl flooring. Extractor fan.

**Ground Floor**  
Approx. 44.7 sq. metres (481.4 sq. feet)



**First Floor**  
Approx. 33.7 sq. metres (362.5 sq. feet)



Total area: approx. 75.8 sq. metres (816.0 sq. feet)





## Exterior

Approximately 50' Rear Garden. Lawn. Outside tap. Shed.

## Additional Information

Dartford Borough Council - Tax Band B

Total floor area: 63 sq. metres

The boiler is located in the cloakroom

Permit parking spaces available.

## Property Location

Castle Street, Greenhithe, Kent, DA9 9AB



FOR MORE INFORMATION  
CONTACT US TODAY.

01322 624440

Robinson Jackson  
39 High Street,  
Swanscombe  
Kent,  
DA10 0AG

swanscombe@robinson-jackson.com

