



Marion Crescent | Maidstone, Kent, ME15 7DY



Offers Over £425,000 Freehold

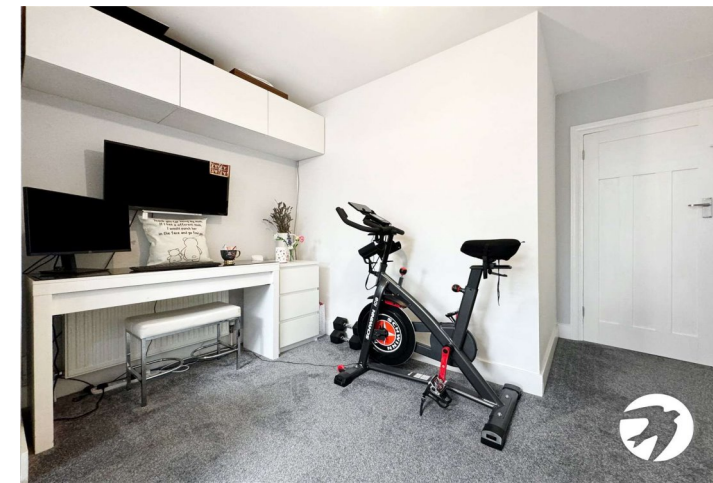
**ROBINSON MICHAEL & JACKSON**  
Our service will *move* you

## Marion Crescent, Maidstone

This stunning two double bedroom detached bungalow offers the perfect blend of privacy and spacious living. Maidstone town centre make this an ideal spot for families or anyone needing a spacious accommodation on one floor.

### Property Features

- Council Tax: D
- EPC Rating: To be confirmed
- Detached Bungalow
- Two double bedrooms
- Beautiful open plan kitchen/diner
- Set in a lovely quiet family area
- Short distance from the town centre
- Walking distance to Mote Park
- Stunning landscaped garden
- Immaculately presented throughout



## Interior

**Entrance Hall** Leads into property

**Lounge** 3.63m x 3.35m (11'11" x 11') Window to the rear, door leading into the garden

**Study** 3.33m x 1.83m (10'11" x 6') Open planned with the lounge

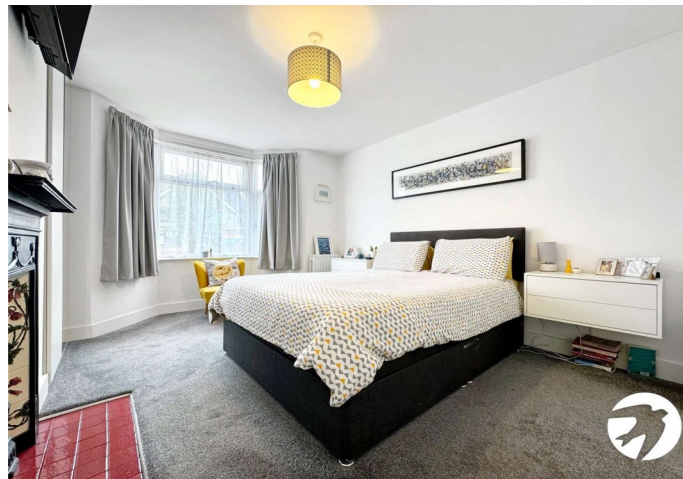
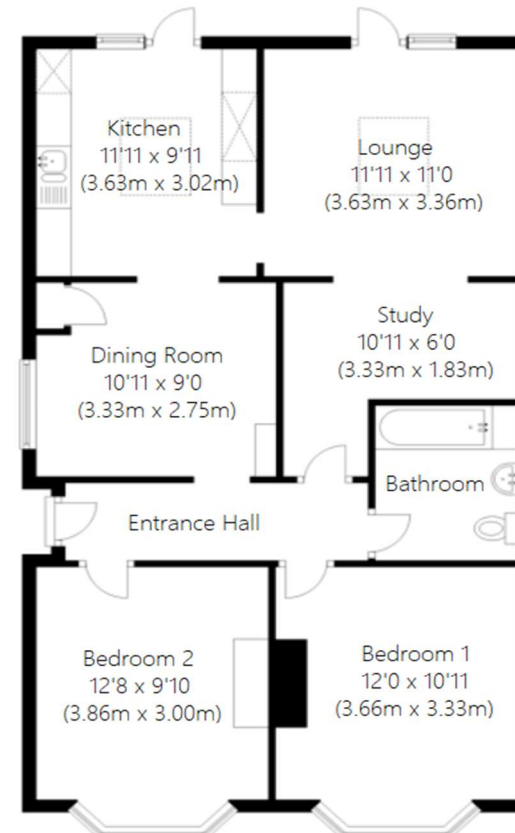
**Dining Room** 3.33m x 2.74m (10'11" x 9') Window to the side, open planned with the kitchen

**Kitchen** 3.63m x 3.02m (11'11" x 9'11") Door leading to the garden, window to the rear, space for washing machine tumble dryer and fridge freezer

**Bedroom 1** 3.66m x 3.33m (12' x 10'11") Bay window to the front, fireplace, double bedroom

**Bedroom 2** 3.86m x 3m (12'8" x 9'10") Bay window to the front, double bedroom, fireplace

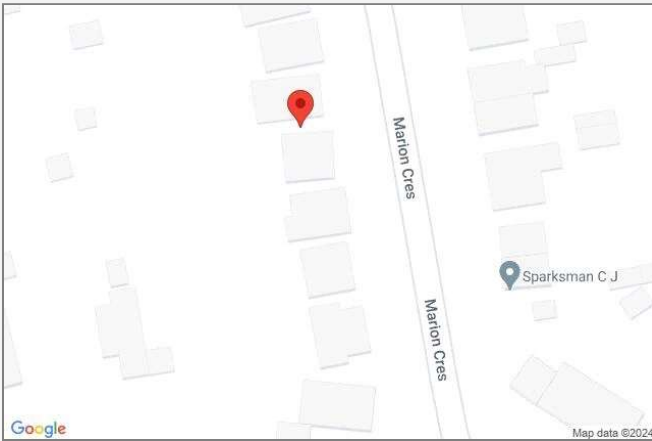
**Bathroom** Window to the side, shower over bath, basin & WC





### Property Location

Marion Crescent, Maidstone, Kent, ME15 7DY



**Scan for the latest properties...**

Follow us on **facebook** for early access to new properties for sale.

**FOR MORE INFORMATION CONTACT US TODAY.**

01622 476666  
Robinson Michael & Jackson  
15A King Street  
Maidstone,  
Kent ME14 1BA  
maidstone@robinson-jackson.com

These particulars do not form part of an offer or contract and must not be relied upon as statements or representation of fact. Any areas, measurements, journey times or distances are approximate. The text, images, photographs and plans are for guidance only and are not necessarily comprehensive. It should not be assumed that the property has all necessary planning, building regulation or other consents and we have not tested any services, equipment or facilities. References to tenure are based on information supplied by the seller. Buyer should verify all information themselves by inspection or otherwise prior to a legal commitment to purchase. Photos and images are subject to copyright.