



Lansdown Road | Sidcup, DA14 4EN



Asking Price £130,000

Leasehold

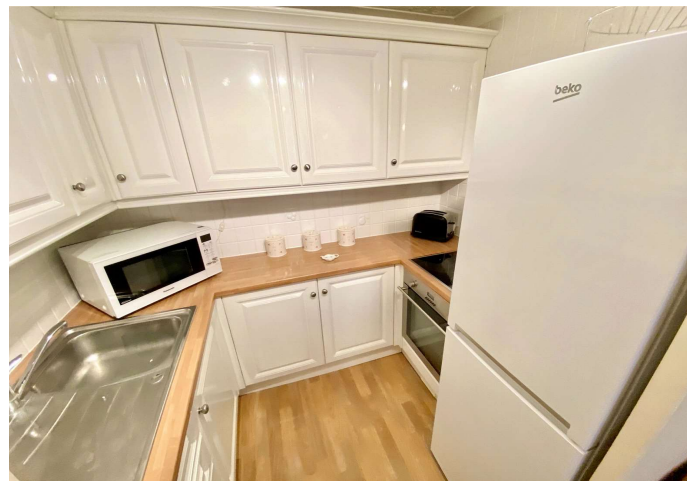
ROBINSON-JACKSON
Our service will *move* you

Lansdown Road, Sidcup

Located perfectly for local shops and amenities, is this very well maintained, one bedroom first floor apartment in a popular retirement development.

Property Features

- Council Tax: C
- EPC Rating: To be confirmed
- Chain Free
- Close to Lift
- Development manager available
- Located Near Laundry Room
- Communal Lounge
- Communal Gardens



Interior

Entrance Hall Entrance door, storage cupboard carpet.

Kitchen 2.18m x 1.57m (7'2" x 5'2") Range of wall and base units, integrated oven and hob, stainless steel sink unit with drainer and mixer tap, space for fridge/freezer, laminate flooring.

Lounge/Diner 5.26m x 3.2m (17'3" x 10'6") Double glazed window to front, feature fireplace, storage heater, carpet.

Bedroom 4.17m x 2.6m (13'8" x 8'6") Double glazed window to front, fitted wardrobes and over heard storage, storage heater, carpet.

Bathroom Panelled bath with mixer tap and shower over, low level w.c, wash hand basin set in vanity unit with mixer tap, chrome heated towel rail, laminate flooring.

Leasehold Information

Unexpired term of lease: Approx 88 years

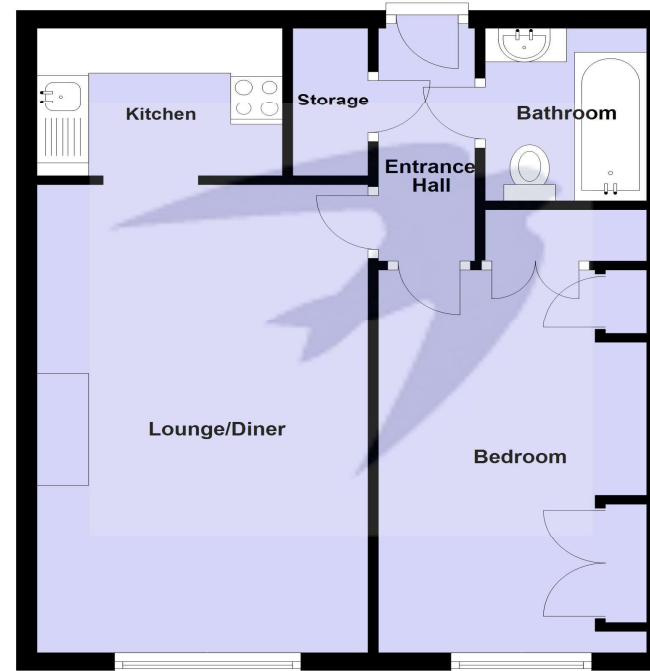
Original start and lease term: 125 Years from 01/11/1987

Current ground rent/service charge: Approx £284.00 per month

Next ground rent review: TBC

All the above needs to be verified by your solicitor.

First Floor



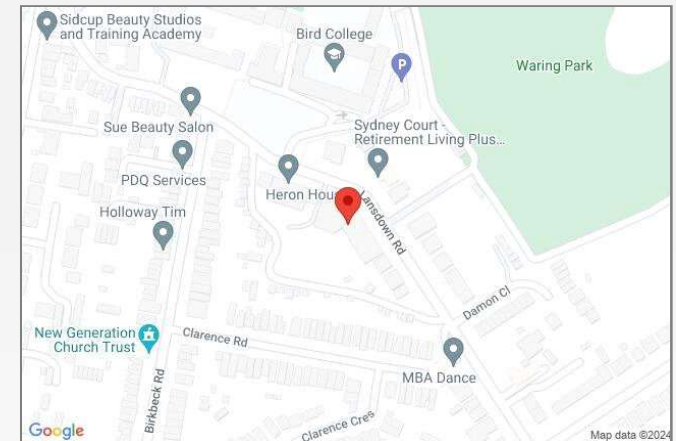
For Illustration Only
Plan produced using PlanUp.





Property Location

Lansdown Road, Sidcup, DA14 4EN



Additional Information

Please note the property is being sold subject to the grant of probate.

Sidcup is located in the London Borough of Bexley. It enjoys a busy high street, a library, supermarkets, a train station, the borough's main hospital, good schools and leisure facilities.

Commuters use Sidcup train station for a direct service into Central London, with journey times from 18 minutes. Sidcup is brimming with pubs and restaurants, with friendly 'locals' serving the community.

FOR MORE INFORMATION
CONTACT US TODAY.

020 8298 0500
Robinson Jackson
1 & 2 Wellington Parade,
Blackfen,
DA15 9NB
tony.murray@robinson-jackson.com

