



Oakways | London, SE9 2NZ



Guide Price £350k to £375k

Leasehold

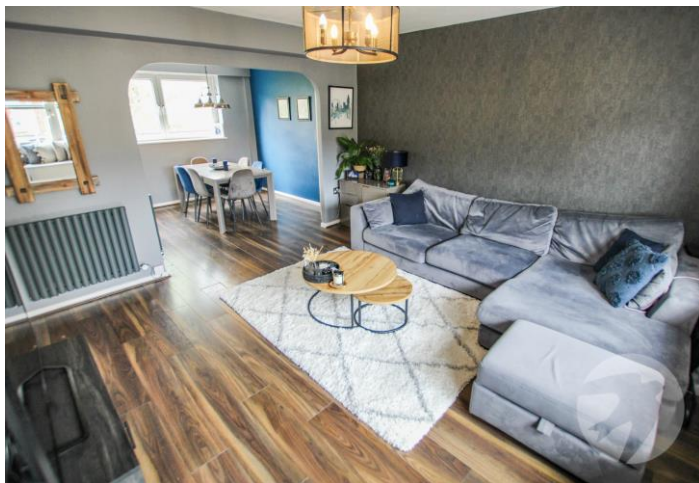
**ROBINSON-JACKSON**  
Our service will *move* you

# Oakways, London

Robinson Jackson are delighted to present this two bedroom split level maisonette situated in a sought after location. The property benefits from a long lease, garage en-bloc and a cul-de-sac location.

## Property Features

- Two bedrooms
- Split level (first & second floor)
- Long lease
- Garage en-bloc
- Close to local parks
- Convenient for High street & station



## Interior

**Entrance Hall** Door to front with window to side, stairs to first floor

**Lounge** 4.27m x 4.22m (14' x 13'10") Double glazed window to front with window seat, built in storage, radiator, wood effect laminate flooring, open aspect to dining area, stairs to second floor

**Dining Area** 2.97m x 2.84m (9'9" x 9'4") Double glazed window to front, radiator, wood effect laminate flooring

**Kitchen** 2.97m x 2.84m (9'9" x 9'4") Double glazed window to rear, range of wall and base units, one and a half bowl sink unit with mixer tap, integrated hob and hob, extractor hood, integrated dishwasher, part tiled walls, spotlights

**Landing** Carpet

**Bedroom 1** 4.11m x 2.92m (13'6" x 9'7") Double glazed window to front, electric radiator, wood effect laminate flooring

**Bedroom 2** 3.2m x 3.1m (10'6" x 10'2") Double glazed window to rear, electric radiator, built in wardrobes

**Bathroom** Double glazed window to rear, panelled bath with shower above, vanity wash hand basin, low level wc, towel rail, part tiled walls, tiled floor



## Exterior

**Garage** En-bloc

## Leasehold Information

Time remaining on lease: Approx. 125 years (approx.)

Ground Rent: £0

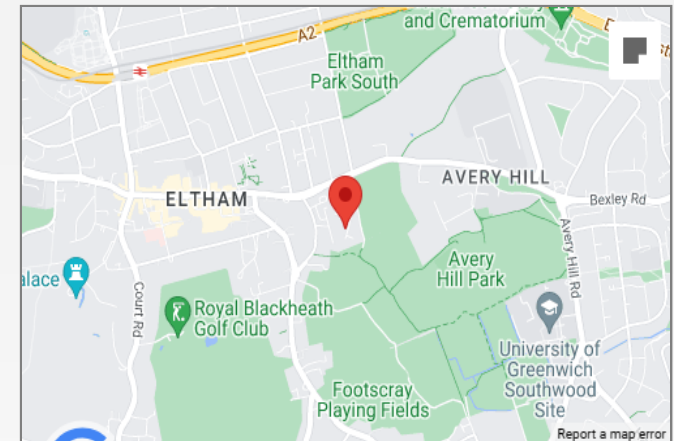
Service Charge: £0





## Property Location

Oakways, London, SE9 2NZ



## Additional Information

Eltham is a popular town in the Royal Borough of Greenwich, with £2 million recently been spent on a High Street revitalisation programme, including a new cinema and sky bar complex.

There's a mainline train station offering a direct route to London and the magnificent Art Deco Eltham Palace. The Heritage Restaurant & Bar at the Tudor Barn, a modern leisure centre, the Bob Hope Theatre and Well Hall Pleasaunce can all be found in the town.

- Council Tax: C
- EPC Rating: To be confirmed

FOR MORE INFORMATION  
CONTACT US TODAY.

020 8859 9600

Robinson Jackson  
2-4 Court Yard,  
Eltham,  
London SE9 5PZ

eltham@robinson-jackson.com

