



Larks Field | Hartley, Kent, DA3 7EJ



Asking Price £575,000

Freehold

**ROBINSON-JACKSON**  
Our service will *move* you

## Larks Field, Hartley

Robinson Jackson are delighted to offer for sale this immaculately presented three double bedroom bungalow located in the popular village location of Hartley. Available with no forward chain.

### Property Features

- Council Tax: E
- EPC Rating: C
- 0.6 Miles Walk To Longfield Station
- 0.6 Miles To Hartley Primary Academy
- 0.5 Miles Walk To Our Lady Of Hartley Catholic Primary School
- Lovely South Facing Rear Garden With Bar
- Double Garage And Parking For Numerous Cars
- No Forward Chain



## Interior

**Entrance Hall:** Leaded double glazed entrance door. Radiator. Wood effect vinyl flooring. Cupboard housing electric meter. Access to loft. Spotlights.

**Bedroom Two:** Leaded double glazed window to front. Coved ceiling. Radiator. Carpet.

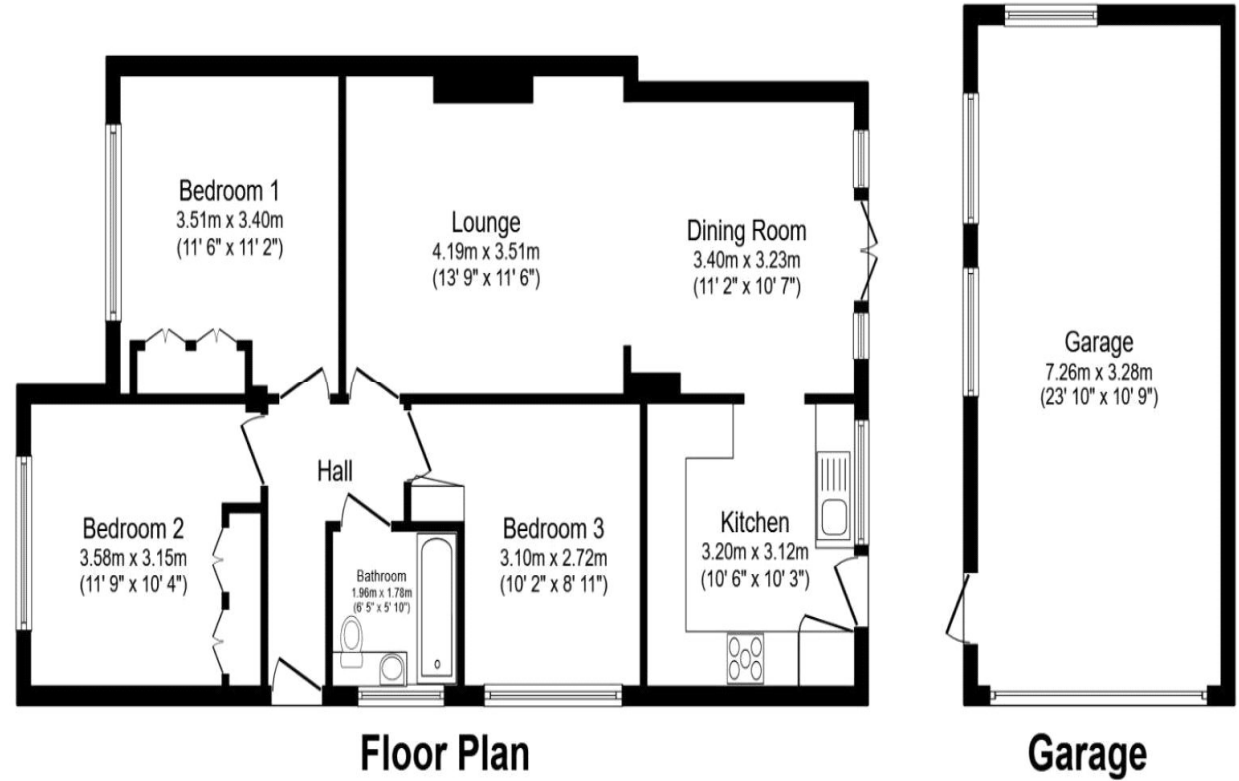
**Bedroom One:** Leaded double glazed window to front. Radiator. Carpet. Coved ceiling.

**Bedroom Three:** Leaded double glazed window to side. Coved ceiling. Radiator. Carpet. Storage cupboard.

**Bathroom:** Leaded frosted double glazed window to side. Spotlights. Low level WC. Vanity wash hand basin. P shape bath with mixer taps. Separate shower. With hand held shower. Tiled walls. Tiled floor. Heated towel rail.

**Living Room:** Double glazed door and window unit to garden. Coved ceiling. Ceiling rose. Two radiators. Feature fireplace with electric fire. Carpet.

**Kitchen:** Double glazed door to garden. Double glazed window to rear. Spotlights. Matching range of wall and base units. Complimentary work-surfaces. Stainless steel sink unit. Built in washing machine. Built in tumble drier. Stainless steel Neff cooker hood. Stainless steel Neff five ring gas hob. Neff electric oven. Space for fridge freezer. Tiled splash-back. Tiled floor with under floor electric heating.





## Property Location

Larks Field, Hartley, Kent, DA3 7EJ



## Additional Information

Council Tax -Sevenoaks Band E

The property was built in the 1930s.

The property measures 79 Square metres.

The owners have lived in the property for 22 years.

South facing rear garden.

The property is connected to mains water, gas and electric services

The property has no forward chain.

## Exterior

Front Garden: Block paved providing off street parking for numerous cars. Driveway leading to double garage to rear. Gas meter.

Rear Garden: South facing approx. 110ft. Large patio area. Access to double detached garage. Bar / seating area. Laid to lawn. Shrub and tree borders. Shed.

Garage: Double up n over door. Power and light. Windows to side. Door to garden.

Parking: Large driveway for numerous cars and double garage.

**FOR MORE INFORMATION  
CONTACT US TODAY.**

01322 281281

Robinson Jackson  
22 Market Street,  
Dartford,  
Kent DA1 1EZ

[dartford@robinson-jackson.com](mailto:dartford@robinson-jackson.com)

