



Chestnut Road | Dartford, Kent, DA1 2LB



Offers In Excess Of £375,000
Freehold

ROBINSON-JACKSON
Our service will *move* you

Chestnut Road, Dartford

Take a look at the internal photos on this immaculately presented two bedroom home located in a quiet cul de sac near Dartford town centre. The property also benefits from a stunning garden barn.

Property Features

- Council Tax: D
- EPC Rating: D
- 0.8 Miles Walk To Dartford Town Centre
- Off Street Parking For Two Cars To The Front
- Side Store Room / Motorbike Garage
- Ground Floor Bathroom / First Floor WC
- Two Double Bedrooms
- Extended Kitchen Diner
- Viewing Comes Highly Recommended



Interior

Storm Porch:

Entrance Hall: Double glazed entrance door. Carpeted stairs to first floor.

Lounge: Double glazed window to front. Radiator. Feature fireplace. Wood effect flooring.

Kitchen Diner: Double glazed doors to garden. Double glazed window to rear. Access to loft. Spotlights. Boiler. Matching range of wall and base units with complimentary granite worktops. Mirrored glass splash backs. Plumbing for washing machine. Dining area with Velux window and built in bench with storage. Space for cooker. Cooker hood. Space for fridge freezer. Wood effect flooring. Under stairs storage area housing plumbing for washing machine. Feature radiator.

Ground Floor Bathroom: Extractor fan. Vanity wash hand basin. Low level WC.

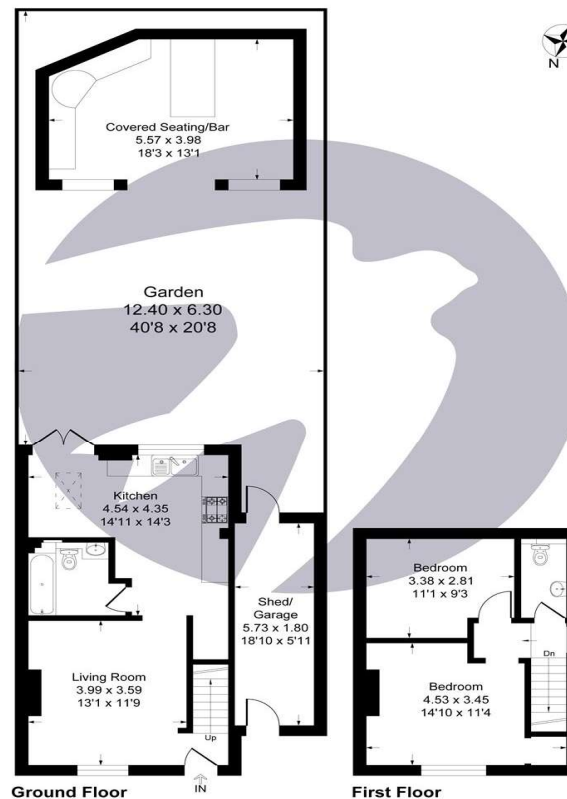
Panel bath. Separate hand held shower. Rainfall shower. Porcelain and granite tiled walls. Spotlights. Extractor fan. Fitted wall mirror. Porcelain tiled floor. Oak dor.

Landing: Carpet.

Bedroom One: Leaded double glazed window to front. Radiator. Carpet. Built in dressing room in cupboard over the stairs.

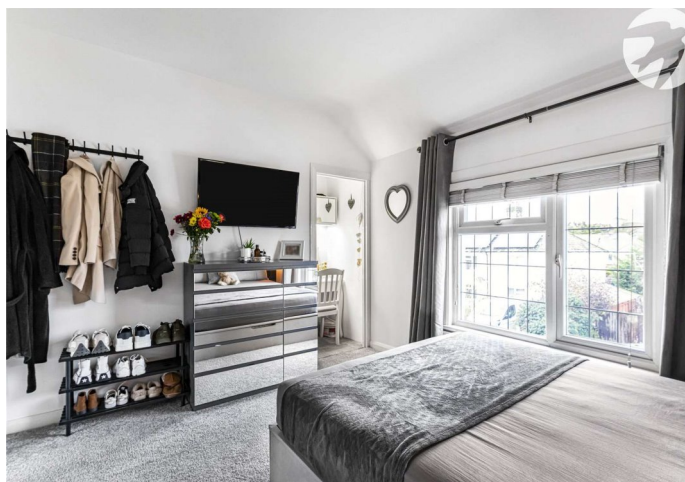
Bedroom Two: Double glazed window to rear. Radiator. Carpet.

First Floor WC: Extractor fan. Low level WC. Vanity wash hand basin. Stainless steel heated towel rail. Tiled floor.



**ROBINSON
JACKSON**

This plan is for layout guidance only. Not drawn to scale unless stated. Windows and door openings are approximate. Whilst every care is taken in the preparation of this plan, please check all dimensions, shapes and compass bearings before making any decisions reliant upon them. Produced By Planpix





Property Location

Chestnut Road, Dartford, Kent, DA1 2LB



Exterior

Front Garden: Fully lit block paved driveway providing off street parking for two cars. Shrub border. Gas meter. Access to store room / motorcycle garage.

Rear Garden: Approx. 40ft South facing. Raised decked area. Artificial lawn. Access to store / motorcycle garage. Outside tap. Outside power point and lighting. Garden barn. Fully controlled exterior lighting with sensors.

Garden Barn: Power and light. Tiled floor, Artificial lawn. Seating area with storage. Bar area with granite worktops. Built in BBQ. Built in pizza oven.

Additional Information

Council Tax Dartford Band D

The property measures 65 Square Metres

The boiler is located in the kitchen.

The garden is South facing.

The owners have found a property that is chain free.

The property has parking for two cars.

**FOR MORE INFORMATION
CONTACT US TODAY.**

01322 281281

Robinson Jackson
22 Market Street,
Dartford,
Kent DA1 1EZ

dartford@robinson-jackson.com



These particulars do not form part of an offer or contract and must not be relied upon as statements or representation of fact. Any areas, measurements, journey times or distances are approximate. The text, images, photographs and plans are for guidance only and are not necessarily comprehensive. It should not be assumed that the property has all necessary planning, building regulation or other consents and we have not tested any services, equipment or facilities. References to tenure are based on information supplied by the seller. Buyer should verify all information themselves by inspection or otherwise prior to a legal commitment to purchase. Photos and images are subject to copyright.