



Ridgeway West | Sidcup, Kent, DA15 8SD



Asking Price £350,000

Freehold

ROBINSON-JACKSON
Our service will *move* you

Ridgeway West, Sidcup

Introducing a fantastic opportunity for those seeking a project: This three-bedroom semi-detached house boasts a chain-free status.

Property Features

- Council Tax: C
- EPC Rating: D
- Chain Free
- In Need Of Modernisation Throughout
- Three Bedrooms
- Kitchen/Diner
- Approximately 90ft Rear Garden
- Convenient Location



Interior

Hallway Double glazed window and double glazed door to front, carpet, radiator.

Lounge 3.56m (11'8") into bay x 3.23m (10'7") Radiator, carpet, double glazed bay window to front, shutter style blinds.

Kitchen/Diner 2.51m (8'3") (narrowing to 1.9m (6'3")) x 4.98m (16'4") Partly carpeted, double glazed window to rear, stainless steel sink and drainer, radiator, double glazed door to rear.

Landing Carpet, double glazed window to side, loft access.

Master Bedroom 3.48m x 3.1m (11'5" x 10'2") Double glazed window to front, radiator, carpet.

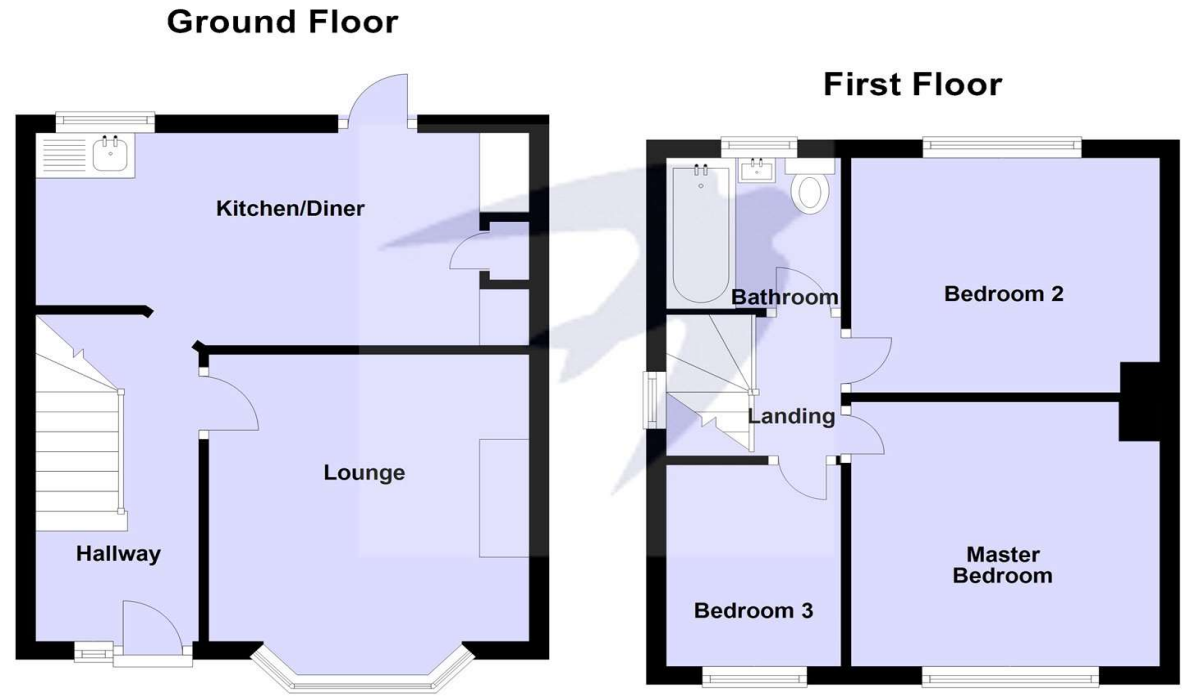
Bedroom Two 2.54m x 3.1m (8'4" x 10'2") Double glazed window to rear, carpet.

Bedroom Three 2.36m x 1.75m (7'9" x 5'9") Double glazed window to front, carpet.

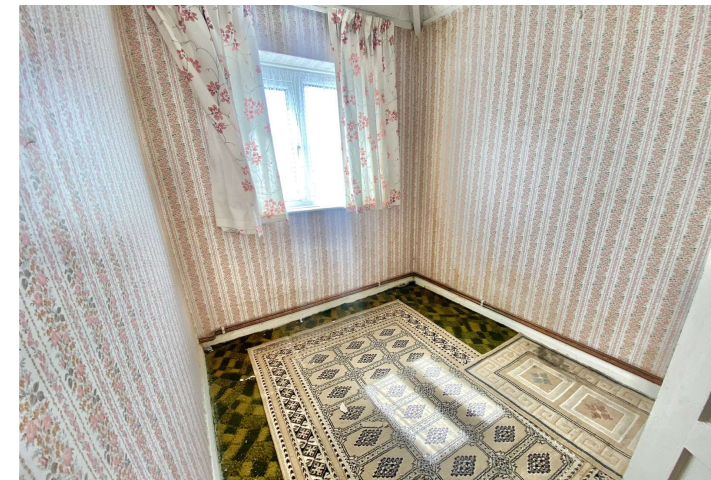
Bathroom Double glazed window to rear, carpet, bath, wash hand basin, w.c., radiator.

Exterior

Garden Approx. 90ft, mainly laid to lawn, paved patio area and mature edged shrub borders.



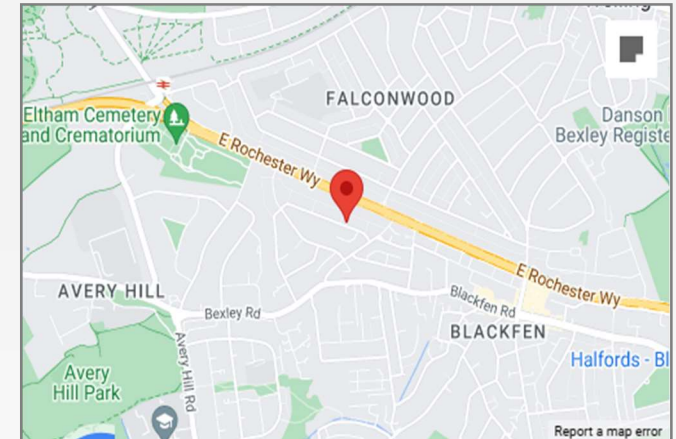
For Illustration Only
Plan produced using PlanUp.





Property Location

Ridgeway West, Sidcup, Kent, DA15 8SD



Additional Information

Sidcup and Blackfen are neighbouring towns in the borough of Bexley, coveted by families with children as they are in the grammar school catchments, with Chislehurst & Sidcup Grammar located off Sidcup's Hurst Road. Each town has its own High Street, with local businesses and supermarkets.

Commuters use Sidcup train station for a direct service into Central London, with journey times from 18 minutes.

Both Sidcup and Blackfen are brimming with pubs and restaurants, with friendly 'locals' serving the community.

**FOR MORE INFORMATION
CONTACT US TODAY.**

020 8298 0500
Robinson Jackson
1 & 2 Wellington Parade,
Blackfen,
DA15 9NB
tony.murray@robinson-jackson.com

