



Cavendish Square

Longfield | Kent | DA3 7RG



Cavendish Square

Longfield, Kent, DA3 7RG

OIEO £300,000

Leasehold

Situated on the over 55's Bramblefield Estate in Longfield within close proximity of BR Station is this newly renovated two-bedroom ground floor maisonette with driveway to front and private patio.

Benefitting from:

- Total Square Footage: 709 Sq. Ft.
- Double Glazing
- Electric Heating
- Lounge with access to Private Patio
- 14' Fully Fitted Kitchen
- New Shower Room
- Close to Longfield Station
- Brand New Lease
- Viewing Recommended
- Council Tax: TBA
- EPC Rating: D



Accommodation

Entrance Hall 3.15m x 2.4m (10'4" x 7'10")

Entrance door. Entrance mat. Carpet. Built in cupboard (6'2 x 3'11) housing water cylinder.

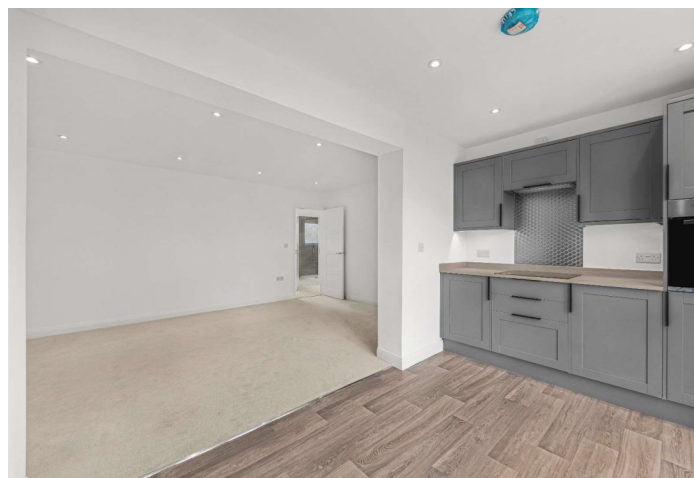
Lounge 4.84m x 3.43m (15'11" x 11'3") Double glazed French doors leading to private patio area. Carpet. Electric heater. Open arch to kitchen.

Kitchen 4.3m x 2.34m (14'1" x 7'8") Double glazed window to rear. Newly fitted wall and base units. Worktops. Integrated fridge. Integrated freezer. Integrated dishwasher. Built in washing machine. Built in oven, hob and extractor. Single drainer sink unit. Mixer tap. Worktop lighting. Laminate wood flooring. Inset spots.

Bedroom 1 3.43mx 3.15m (11'3"x 10'4") Double glazed window to front. Carpet. Electric heater. Built in wardrobe cupboard.

Bedroom 2 3.43m x 2.97m (11'3" x 9'9") Double glazed window to rear. Carpet. Electric heater.

Shower Room 2.03m x 1.93m (6'8" x 6'4") Frosted double glazed window to front. Double glazed window to front. Large walk-in shower with overhead spray and handheld attachment. Vanity wash hand basin with low level w.c. Tiled floor. Tiled walls. Heated towel rail. Fitted mirror with sensor lighting. Inset spots. Extractor fan.





Exterior

Exterior: Private paved patio. Open access to communal gardens.

Parking. Block paved drive for 1 car to front.

Leasehold Information

Time remaining on lease: Approx. 125 years to be created on completion.

Ground Rent: Not Available

Service Charge: £500.00 Per Annum

Ground Rent Review Date:

Additional Information

Longfield and New Barn is a civil parish named after the adjacent villages it covers, the eastern part being New Barn, it also covers the smaller settlement, the neighbourhood of Longfield Hill. Longfield is the ancient village, situated on the road between Dartford and Meopham; the historic church there is dedicated to St Mary Magdalene. New Barn is larger in population than Longfield, although has little in the way of services, being a comparatively recent development and purely residential in nature.

Council Tax - TBA

EPC Rating - D





Important Notice

These particulars do not form part of an offer or contract and must not be relied upon as statements or representation of fact. Any areas, measurements, journey times or distances are approximate. The text, images, photographs and plans are for guidance only and are not necessarily comprehensive. It should not be assumed that the property has all necessary planning, building regulation or other consents and we have not tested any services, equipment or facilities. References to tenure are based on information supplied by the seller. Buyer should verify all information themselves by inspection or otherwise prior to a legal commitment to purchase. Photos and images are subject to copyright.

Location



(All distances & times are approximates)

FOR MORE INFORMATION CONTACT US TODAY.

Nick Menzies - Area Partner

01322 281281

Robinson Jackson
22 Market Street,
Dartford,
Kent DA1 1EZ

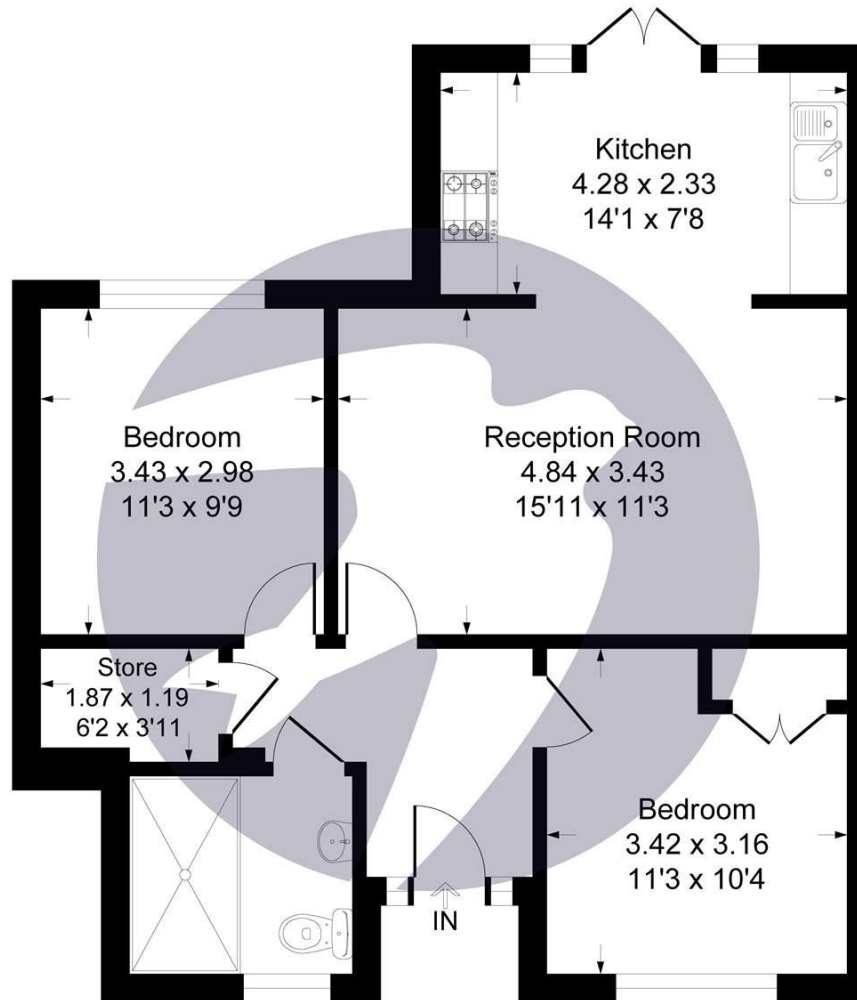
dartford@robinson-jackson.com

SALES | MORTGAGES | LEGALS

ROBINSON-JACKSON

Cavendish Square,, DA3

Approximate Gross Internal Area 65.8 sq m / 709 sq ft



Ground Floor



This plan is for layout guidance only. Not drawn to scale unless stated. Windows and door openings are approximate. Whilst every care is taken in the preparation of this plan, please check all dimensions, shapes and compass bearings before making any decisions reliant upon them.

Produced By Planpix

