



Denton Road | Welling, Kent, DA16 1AZ



Offers In Excess Of: £500,000

Freehold

**ROBINSON-JACKSON**  
Our service will *move* you

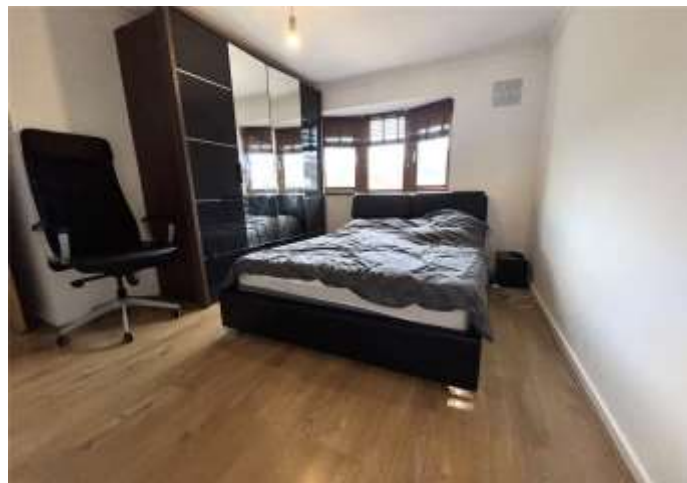


## Denton Road, Welling

A well presented THREE BEDROOM SEMI-DETACHED family home conveniently located for shops, schools and local transport links. Allowing access to the Elizabeth line at Abbey Wood Station.

### Property Features

- Council Tax: D
- EPC Rating: D
- 19FT KITCHEN/DINER
- 16FT LOUNGE
- DOUBLE GLAZING
- CENTRAL HEATING
- OFF STREET PARKING
- UTILITY ROOM
- PAVED GARDEN



## Interior

**Porch:** Double glazed door to front, double glazed window to front and tiled flooring.

**Entrance Hall:** Double glazed door to front and wood style laminate flooring.

**Lounge:** 4.98m x 3.8m (16'4" x 12'6") Double glazed bay window to front and wood style laminate flooring.

**Kitchen:** 6.07m x 2.92m (19'11" x 9'7") Fitted with a range of wall and base units with contrasting work surfaces. Integrated oven, hob and filter hood. Double glazed window to rear, tiled flooring and wooden door to side leading to utility room.

**Utility Room:** 3.25m x 3.2m (10'8" x 10'6") Double glazed window to rear, tiled flooring and double glazed door to rear.

**Conservatory:** 3.33m x 2.18m (10'11" x 7'2") Double glazed windows to rear, double glazed windows to side, tiled flooring and double glazed double doors to rear.

**Gym:** 4.93m x 3.15m (16'2" x 10'4") Double glazed window to side and front. Wood style laminate flooring.

**Landing:** Double glazed window to side and wood style laminate flooring.

**Bedroom 1:** 4.3m x 3.84m (14'1" x 12'7") Double glazed bay window to front and wood style laminate flooring.

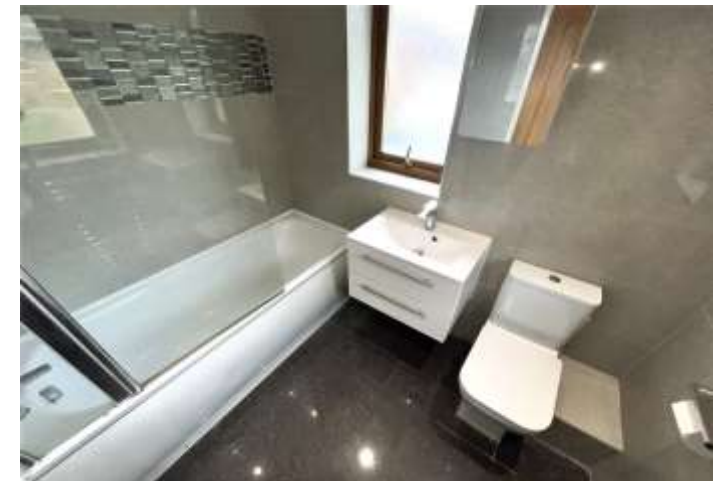
**Bedroom 2:** 3.38m x 2.87m (11'1" x 9'5") Double glazed window to rear and wood style laminate flooring.

**Bedroom 3:** 2.67m x 2.41m (8'9" x 7'11") Double glazed window to front and carpet as fitted.

**Bathroom:** Fitted with a three piece suite comprising of wall mounted vanity wash hand basin, low level wc and panelled bath with shower over and glass shower screen. Chrome style heated towel rail, tiled walls, tiled flooring and double glazed windows to side and rear.

# New to Market

## Property awaiting floorplan







## Exterior

**Garden:** Paved garden and shed.

**Parking:** Driveway providing off street parking.

## Additional Information

Welling has been a favoured town for many years, with access to Bexley borough's four grammar schools as well as the 78-hectare Danson Park, with its historic house, boating lake, sports pitches, splash park and pub.

The town's heart is in the High Street, where you'll find shops, pubs, restaurants and the mainline train station, with its direct trains to London. Don't miss Crook Log Leisure Centre – Welling's sports and pool complex.

## Property Location

Denton Road, Welling, Kent, DA16 1AZ



**FOR MORE INFORMATION CONTACT US TODAY.**

Scott Dowler - Branch Manager  
020 8303 5213

Robinson Jackson  
146 Welling High Street,  
Welling,  
DA16 1TJ  
welling@robinson-jackson.com

**SALES | MORTGAGES | LEGALS** **ROBINSON-JACKSON**