



Crown Road | Sittingbourne, Kent, ME10 2AH



Guide Price £190,000 to £210,000

Share of Freehold

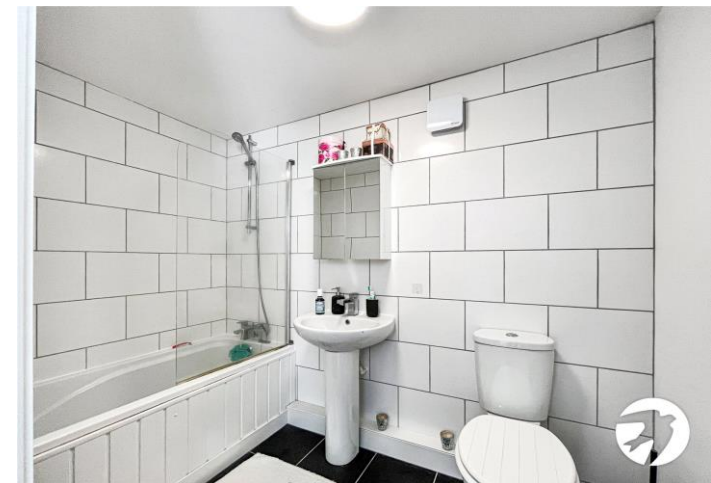
ROBINSON MICHAEL & JACKSON
Our service will *move* you

Crown Road, Sittingbourne

Conveniently situated in a prime location, this 2-bedroom ground floor apartment offers a practical layout ideal for modern living, off road parking and no associated service charges,

Property Features

- Council Tax: B
- EPC Rating: C
- 2 Bed ground floor flat
- No service charge
- Off street parking
- Walking distance to local amenities
- Share of Freehold
- Outdoor space



Property Features

- Council Tax: B
- EPC Rating: C
- 2 Bed ground floor flat
- No service charge
- Off street parking
- Walking distance to local amenities
- Share of Freehold
- Outdoor space

Interior

Living Space: 6.76m x 4.42m (22'2" x 14'6") Open Plan kitchen, living and dining space

Bedroom 1: 3.58m x 3.3m (11'9" x 10'10")

Bedroom 2: 2.51m x 3.18m (8'3" x 10'5")

Bedroom 3: 1.73m x 2.84m (5'8" x 9'4") Wardrobe Room

Bathroom: 1.7m x 2.51m (5'7" x 8'3")

Exterior

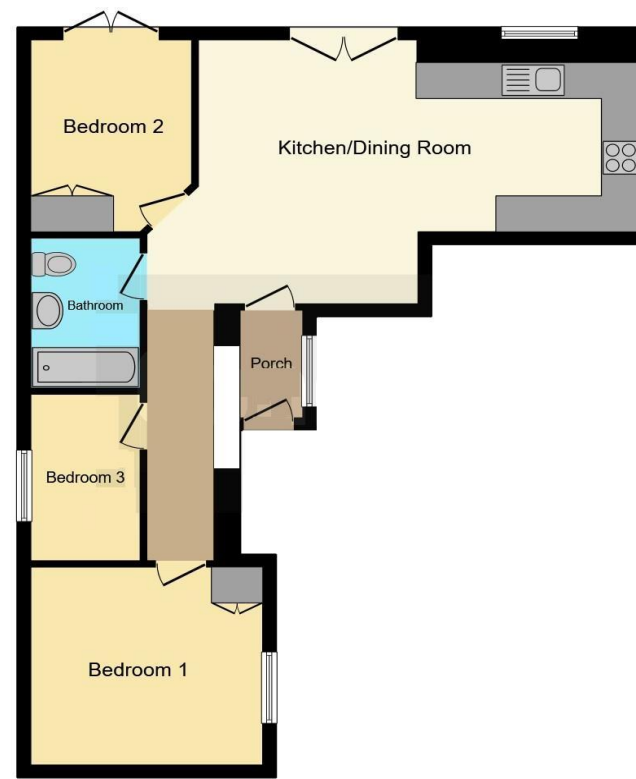
Outside patio/seating area.

Share of Freehold Information

Time remaining on lease: Approx. 116 years and 11 months

Ground Rent: Not Available

Service Charge: Not Available



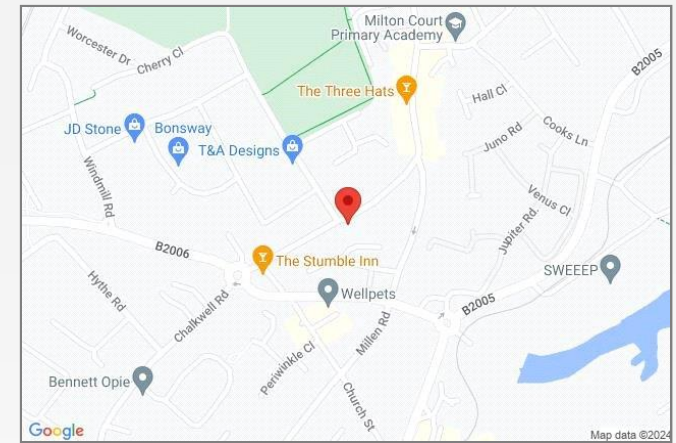
This floorplan is for illustrative purposes only and is not drawn to scale. Measurements, floor-areas, openings and orientations are approximate. They should not be relied upon for any purpose and do not form any part of an agreement. No liability is taken for any error or mis-statement. All parties must rely on their own inspections.





Property Location

Crown Road, Sittingbourne, Kent, ME10 2AH



**FOR MORE INFORMATION
CONTACT US TODAY.**

01795 479999
Robinson Michael & Jackson
38 West Street,
Sittingbourne,
Kent, ME10 1AP
sittingbourne@robinson-jackson.com

