



Kent House Road | Beckenham, BR3 1JN



Asking Price £325,000

Share of Freehold

ROBINSON-JACKSON
Our service will *move* you

Kent House Road, Beckenham

High specification ground floor period conversion maisonette offered chain free with one double bedroom, 18' kitchen/diner, Galleried study area, share of freehold, double glazing, oak flooring, and integrated appliances set within a highly desirable location, Penge East and Kent House Stations within walking distance, conveniently located for local independent shops, eateries and bars and Alexandra Recreation Ground

Property Features

- Council Tax: B
- EPC Rating: E



Interior

Lounge/Kitchen Lounge: wooden entrance door, two double glazed windows to front, two sky lights, radiator, oak flooring. Kitchen: range of grey wall and base units with stone effect work surface over, stone effect splash back, one bowl stainless steel sink unit with mixer tap, oven, hob, microwave and extractor fan to remain, integrated fridge/freezer and washing machine, cupboard housing wall mounted boiler, oak flooring, spotlights.

Bathroom Sky light, heated towel rail, three piece bathroom suite comprising of: panelled bath with mixer tap, hand shower and mixer shower over, inset wall mounted wash hand basin with mixer tap and drawers under, low level wc, marble effect tiled flooring, marble effect tiled walls, built in shelves, spotlights.

Bedroom Double glazed window to side, radiator, oak flooring, spotlights, stairs up to galleried area.

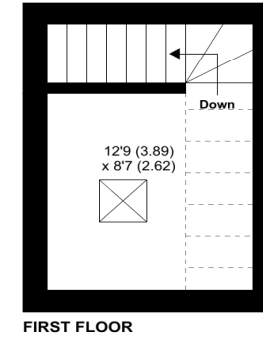
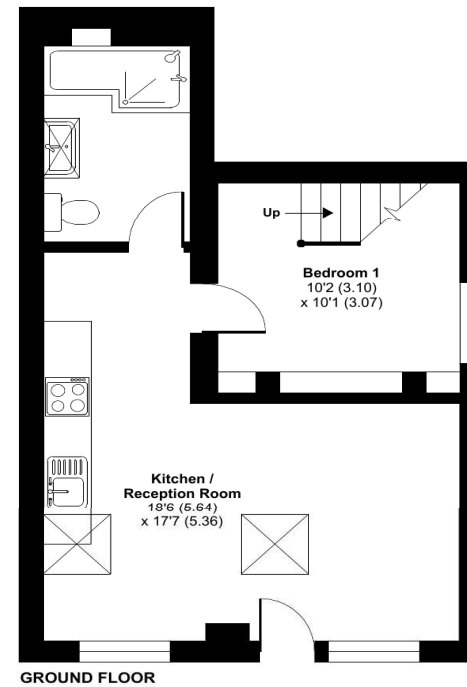
Galleried Area Sky light, radiator, oak flooring, spotlights.

Share of Freehold Information

Time remaining on lease: 999 Years

Ground Rent: Not Available

Service Charge: Not Available



Approximate Area = 532 sq ft / 49.4 sq m
Limited Use Area(s) = 26 sq ft / 2.4 sq m
Total = 558 sq ft / 51.8 sq m
For identification only - Not to scale



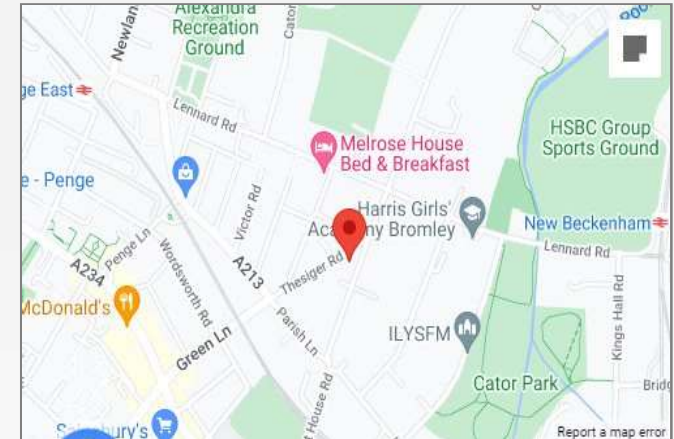
Floor plan produced in accordance with RICS Property Measurement Standards incorporating International Property Measurement Standards (IPMS2 Residential). © nichecom 2024.





Property Location

Kent House Road, Beckenham, BR3 1JN



Additional Information

Double glazing

Central heating

Oak flooring where stated

Ground floor

Chain free

Share of freehold

Integrated appliances

18' Lounge/Kitchen

Galleried study

Open plan

High specification

Penge East & Kent House Stations within a short walk

Conveniently located for local independent shops, eateries and bars and Alexandra Recreation Ground

**FOR MORE INFORMATION
CONTACT US TODAY.**

020 8776 6660

Robinson Jackson
256 Kirkdale,
Sydenham,
London SE26 4NL

sydenham@robinson-jackson.com



These particulars do not form part of an offer or contract and must not be relied upon as statements or representation of fact. Any areas, measurements, journey times or distances are approximate. The text, images, photographs and plans are for guidance only and are not necessarily comprehensive. It should not be assumed that the property has all necessary planning, building regulation or other consents and we have not tested any services, equipment or facilities. References to tenure are based on information supplied by the seller. Buyer should verify all information themselves by inspection or otherwise prior to a legal commitment to purchase. Photos and images are subject to copyright.