



Arnhem Place | London, Tower Hamlets, E14 3ST



Asking Price £425,000

Leasehold

ROBINSON-JACKSON
Our service will *move* you

Arnhem Place, London

One bedroom flat located in a prime location. The spacious living area is perfect for entertaining guests or relaxing after a long day. The bedroom offers a peaceful retreat with ample space and natural light. The apartment features two private balconies where you can enjoy stunning views of the surrounding area. With the convenience of a lift, accessing your home is effortless.

Situated in a sought-after neighbourhood, this property provides easy access to local amenities, transport links, and green spaces.

Property Features

- CHAIN FREE
- One bedroom flat
- Two balconies
- Ample storage
- Allocated parking bay
- Communal gardens
- Close to local amenities
- Great location for transport links
- Total floor area: 62m²= 667ft² (guidance only)



Interior

ENTRANCE HALL: 1.33m x 6.52m (4'4" x 21'5") Entrance door, laminate wood floor, spotlights, built in storage cupboard, radiator, access to all rooms and balcony 2.

RECEPTION ROOM: 4.94m x 4.68m (16'2" x 15'4") Double glazed floor to ceiling windows and double glazed door to balcony, laminate wood floor, spotlights, built in wardrobe, two radiators.

BALCONY 1: 2.03m x 3.96m (6'8" x 13') Decked.

KITCHEN: 5.18m x 2.55m (17' x 8'4") Two double glazed windows, range of wall and base units, integrated electric oven, hob and extractor hood over, sink unit with mixer tap, space for free standing fridge freezer, tiled floor, built in storage cupboard, radiator, spotlights.

BEDROOM: 4.17m x 4.36m (13'8" x 14'4") Double glazed window and double glazed door to balcony 1, laminate wood floor, built in wardrobe, radiator, spotlights.

BALCONY 2: 3.98m x 1.95m (13'1" x 6'5") Decked.

BATHROOM: 1.52m x 2.53m (5' x 8'4") Panel enclosed bath with shower over and glass shower screen, low level w.c., wash hand basin, heated towel rail, spotlights, extractor fan, tiled walls and floor.

Leasehold Information

Length of Lease: 125 Years from 1st July 1999*

Time remaining on lease: Approx. 100 Years*

Service Charge: £4,469 per year *

Ground Rent: £150 per year *

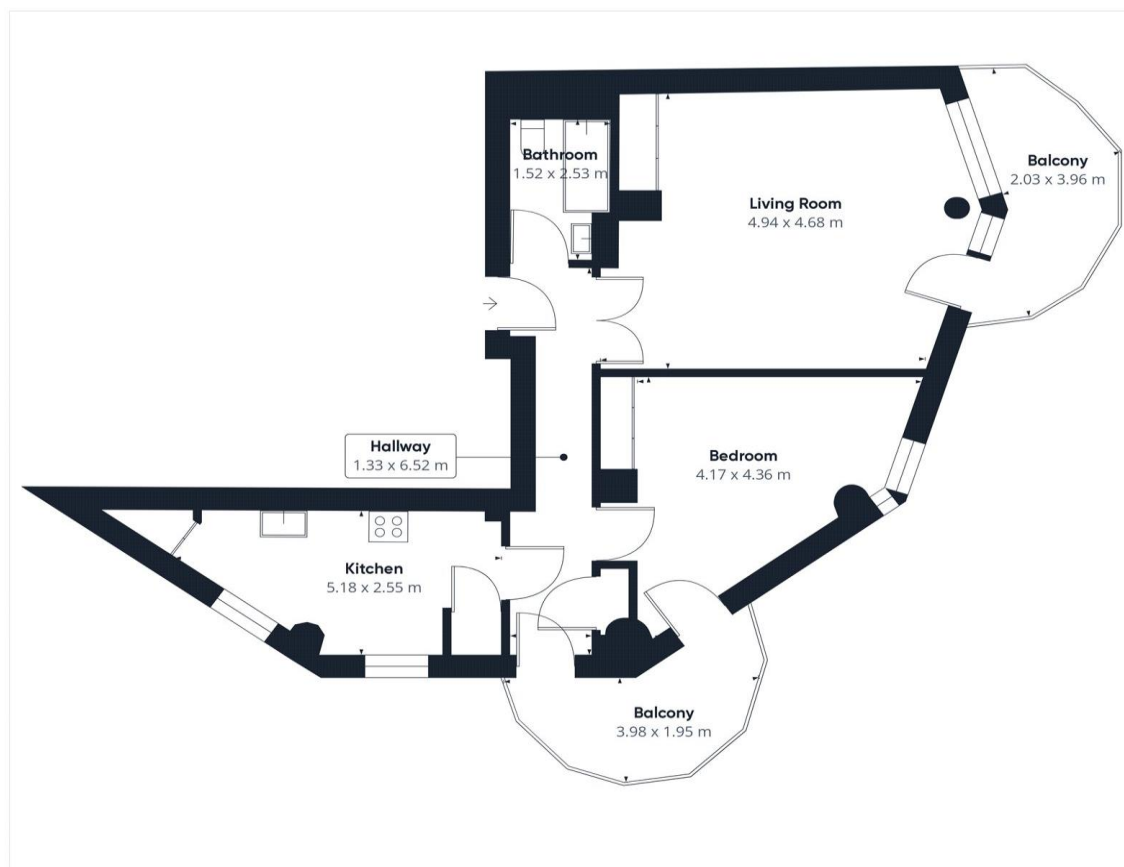
(*to be verified by Vendors Solicitor)

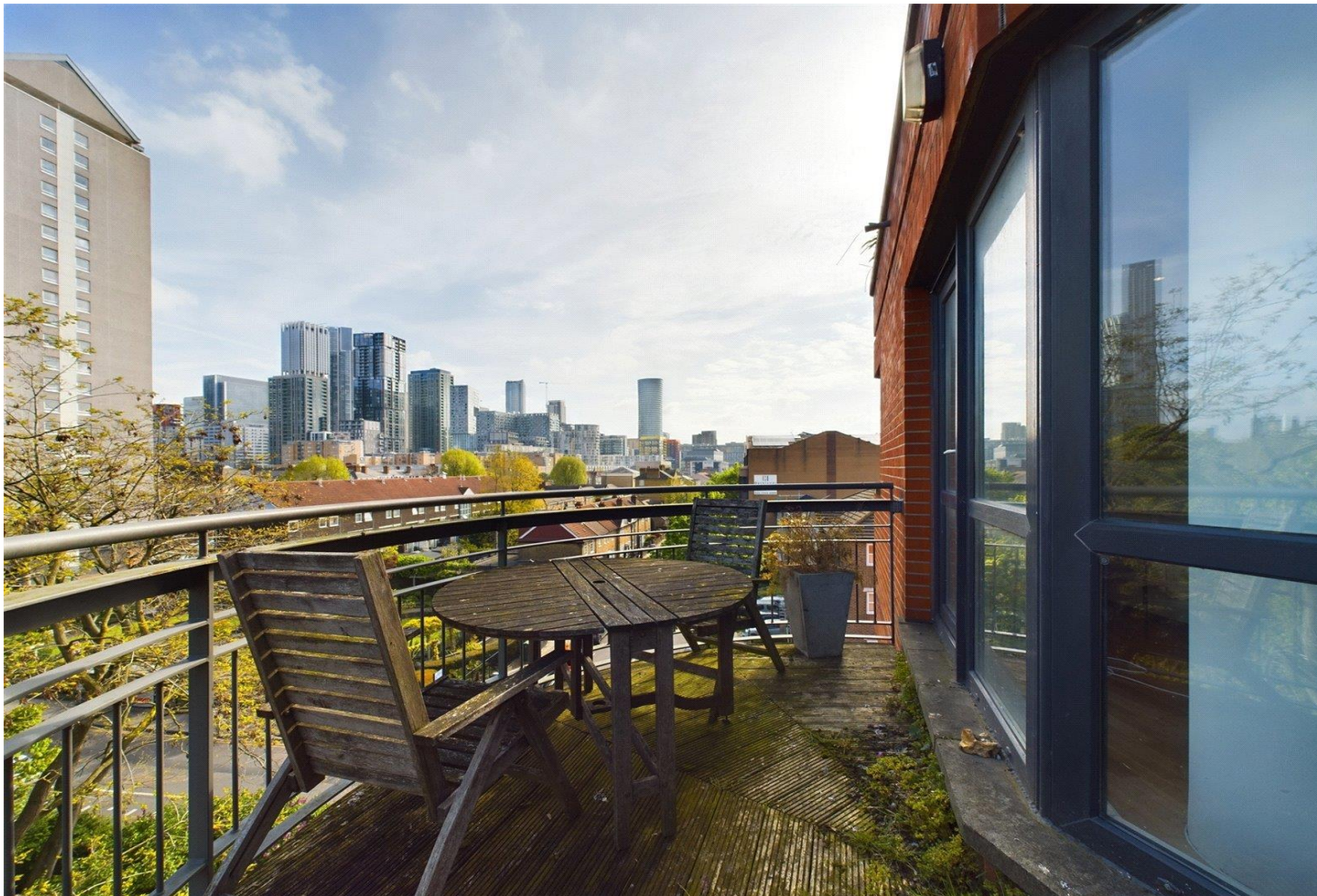
Additional Information

Local Authority: London Borough of Tower Hamlets

Council Tax: Band E

EPC Rating: C





Property Location

Arnhem Place, London, Tower Hamlets, E14 3ST



Location

The Isle of Dogs is a large peninsula bounded on three sides by a large meander in the River Thames in East London, England, which includes the Cubitt Town, Millwall and Canary Wharf districts.

Isle of Dogs London is currently one of the hottest places to be. This bustling city has it all – from attractions to dining, shopping to nightlife, there's something for everyone. There are many restaurants, bars, and shops located in the area, as well as a cinema and a stadium. This charming neighbourhood is overflowing with boutiques, women's clothing stores, galleries, and specialty stores that will have you spoilt for choice. The residents can also enjoy activities such as swimming, surfing, and boating in the river. The city is served by several transport links including the nearby Victoria and Waterloo railway stations and London Overground's West Croydon branch.

**FOR MORE INFORMATION
CONTACT US TODAY.**

020 8297 8777

Robinson Jackson
27 Lewis Grove,
Lewisham,
London, SE13 6BG

lewisham@robinson-jackson.com



These particulars do not form part of an offer or contract and must not be relied upon as statements or representation of fact. Any areas, measurements, journey times or distances are approximate. The text, images, photographs and plans are for guidance only and are not necessarily comprehensive. It should not be assumed that the property has all necessary planning, building regulation or other consents and we have not tested any services, equipment or facilities. References to tenure are based on information supplied by the seller. Buyer should verify all information themselves by inspection or otherwise prior to a legal commitment to purchase. Photos and images are subject to copyright.