



The Green | Dartford, Kent, DA2 6JR



£525,000 to £550,000

Freehold

ROBINSON-JACKSON
Our service will *move* you

The Green, Dartford

Robinson Jackson are pleased to offer this well presented and maintained three double bedroom detached family home located on the Sought After Darenth Village Park.

Property Features

- Council Tax: E
- EPC Rating: D
- Detached Family Home
- Sought After Modern Development
- En-Suite to Bedroom One
- Utility and Cloakroom
- Established Rear Garden
- Integral Garage with Power and Lighting



Interior

Entrance Hall Door to front. Carpeted stairs to first floor.

Lounge 4.8m x 3.38m (15'9" x 11'1") Double glazed windows to front. Radiator. Carpet.

Dining Room 2.44m x 2.46m (8' x 8'1") Double glazed french doors to rear. Radiator. Carpet.

Kitchen 3.05m x 2.41m (10' x 7'11") Double glazed window to rear. Range of wall and base units with complementary worksurfaces over incorporating stainless steel sink drainer. Integrated oven, hob and extractor hood. Space for fridge freezer. Plumbed for dishwasher. Part tiled walls. Vinyl flooring.

Utility Room Double glazed door to rear. Base units with work surfaces over incorporating stainless steel sink drainer. Wall mounted boiler. Plumbed for washing machine. Part tiled walls. Vinyl flooring.

Ground Floor Wc Low level Wc. Pedestal wash hand basin. Radiator. Vinyl flooring.

Landing Loft access. Doors to:

Bedroom One 3.68m x 2.6m (12'1" x 8'6") Double glazed windows to front. Radiator. Carpet.

En-Suite Double glazed window to front. Low level Wc. Shower cubicle. Vanity wash hand basin. Radiator. Vinyl flooring.

Bedroom Two 6.17m x 2.67m (20'3" x 8'9") Double glazed window to front and rear. Radiator. Carpet.

Bedroom Three 3.53m x 2.18m (11'7" x 7'2") Double glazed window to rear. Radiator. Carpet.

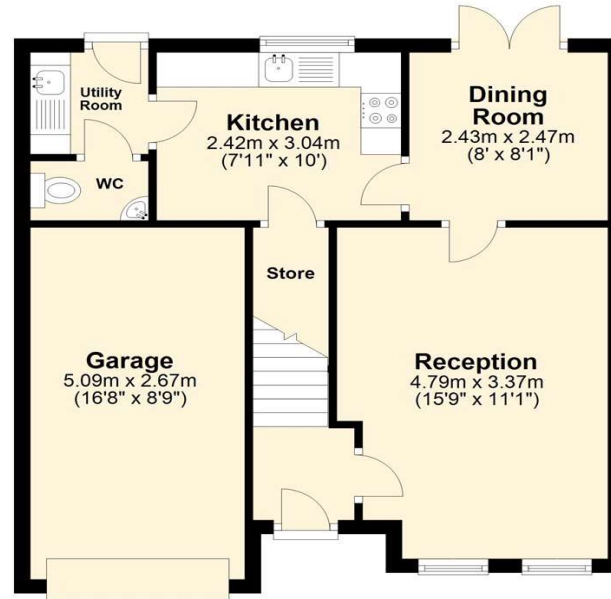
Bathroom Double glazed window to rear. Low level Wc. Vanity wash hand basin. Panelled bath. Part tiled walls. Radiator. Vinyl flooring.

Exterior

Front Garden: Brick laid driveway for two cars. Lawn area. Established shrub border.

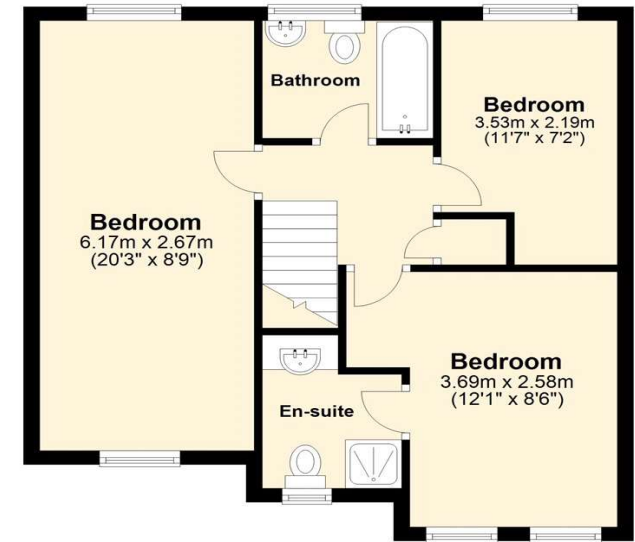
Ground Floor

Approx. 52.2 sq. metres (562.2 sq. feet)



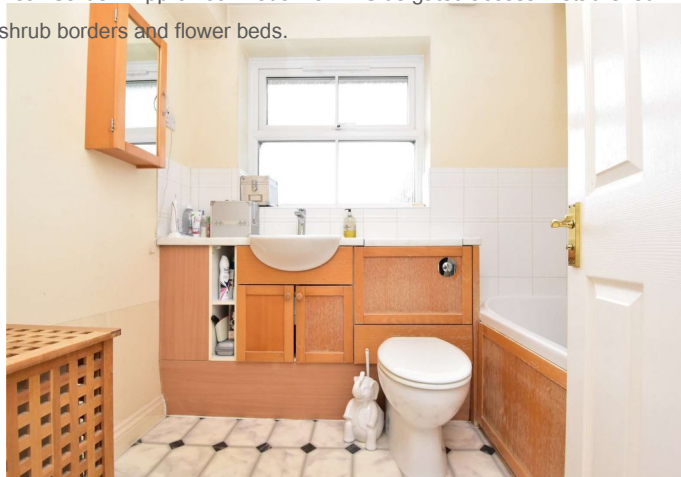
First Floor

Approx. 48.9 sq. metres (526.4 sq. feet)



Total area: approx. 101.1 sq. metres (1088.6 sq. feet)

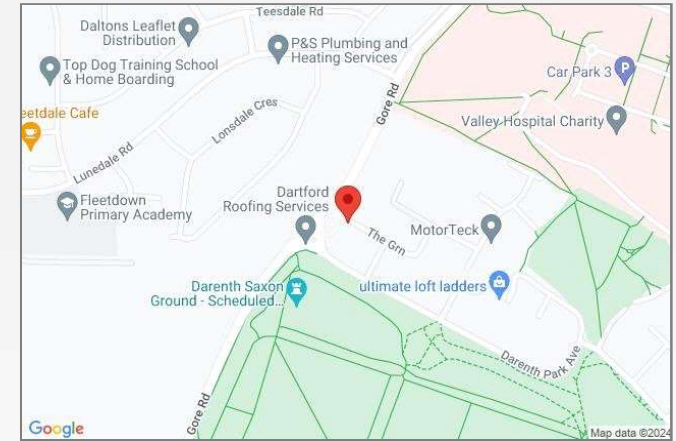
Rear Garden: Approx 60'. Patio. Lawn. Side gated access. Established shrub borders and flower beds.





Property Location

The Green, Dartford, Kent, DA2 6JR



Additional Information

The boiler is located in the utility room.

The property measures approx.: 101 Sqm

Service charge: £120 per annum for communal grounds maintenance.

The rear garden faces west.

**FOR MORE INFORMATION
CONTACT US TODAY.**

01322 281281

Robinson Jackson
22 Market Street,
Dartford,
Kent DA1 1EZ

dartford@robinson-jackson.com

