



Gertrude Road | Belvedere, Kent, DA17 5AS



2



1



2

Asking Price £350,000

Freehold

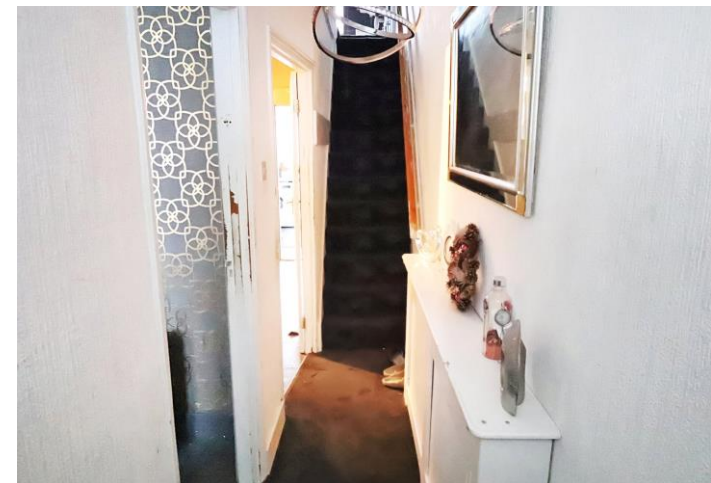
ROBINSON-JACKSON
Our service will *move* you

Gertrude Road, Belvedere

Call today to view this two bedroom Victorian terraced home, situated only a short walk from Belvedere train station. The property comprises of two reception rooms, kitchen, two bedrooms, first floor bathroom and a low maintenance rear garden.

Property Features

- Two double bedrooms
- Two reception rooms
- First floor bathroom
- Large garage to rear
- Close to belvedere train station
- Viewing advised



Interior

Entrance Hall Half UPVC half double glazed door to front, radiator, carpet

Entrance Hall Wooden door to front, radiator, carpet

Lounge 3.48m x 3.25m (11'5" x 10'8") Double glazed bay window to front, gas fire with decorative surround, radiator, exposed stripped floorboards, cupboard to alcove

Dining Room 3.48m x 3.25m (11'5" x 10'8") Double glazed french doors to rear, radiator, laminate tiled floor, downstairs cupboard

Kitchen 3.1m x 2.36m (10'2" x 7'9") Double glazed windows to rear and side, wall and base units with work surfaces above, stainless steel sink with mixer tap, electric oven and four ring gas hob, extractor, space for fridge/freezer and washing machine, integrated dishwasher, laminate floor tiles, radiator, part tiled walls

Landing Carpet, access to loft

Bedroom 1 4.17m x 3.48m (13'8" x 11'5") Two double glazed windows to front, radiator, carpet

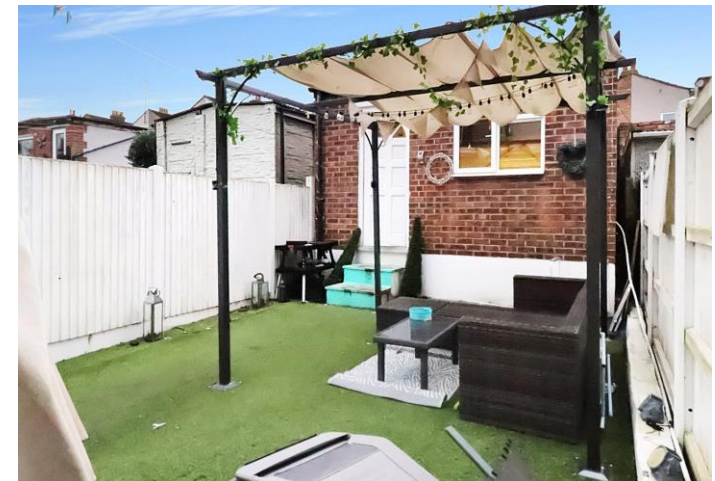
Bedroom 2 3.48m x 2.62m (11'5" x 8'7") Double glazed window to rear, radiator, exposed stripped floorboards

Bathroom Double glazed frosted window, low level wc, wash hand basin, panelled bath with mixer tap and glass screen, cupboard housing water cylinder, tiled floor, part tiled walls, heated towel rail

Exterior

Garden Patio, artificial lawn

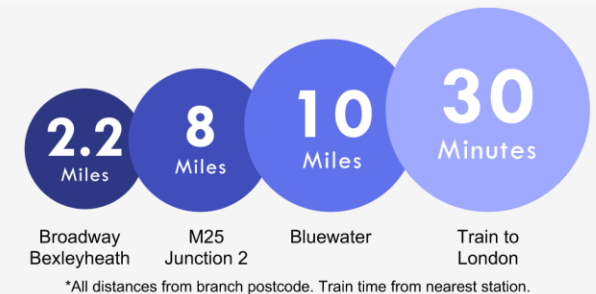
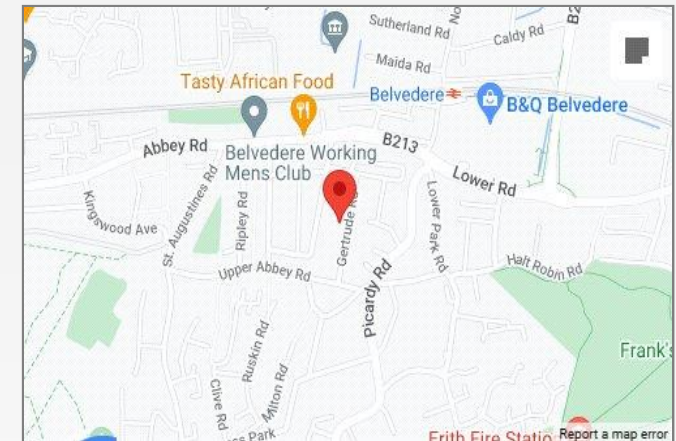
Garage 4.98m x 4m (16'4" x 13'1") To rear, up and over door, power, gated alleyway





Property Location

Gertrude Road, Belvedere, Kent, DA17 5AS



At the heart of Belvedere is Nuxley Village – where you'll find shops, pubs, restaurants and the Robinson Jackson branch. Explore a little further and you'll find Lesnes Abbey, with its historic monastic ruins and formal gardens, and Bostall Woods with its protected bluebell fields and ancient trees.

Belvedere residents will be a manageable walk or one stop on the train line away from Abbey Wood's forthcoming Crossrail station.

- Council Tax: C
- EPC Rating: E

**FOR MORE INFORMATION
CONTACT US TODAY.**

01322 441010
Robinson Jackson
61 Nuxley Road,
Belvedere,
Kent DA17 5JN
belvedere@robinson-jackson.com

